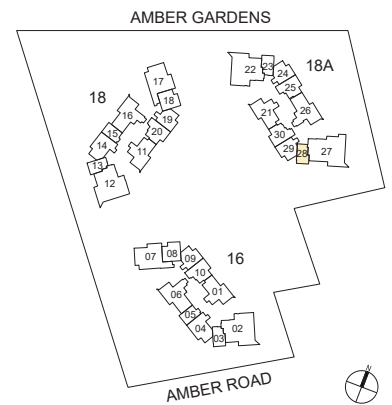
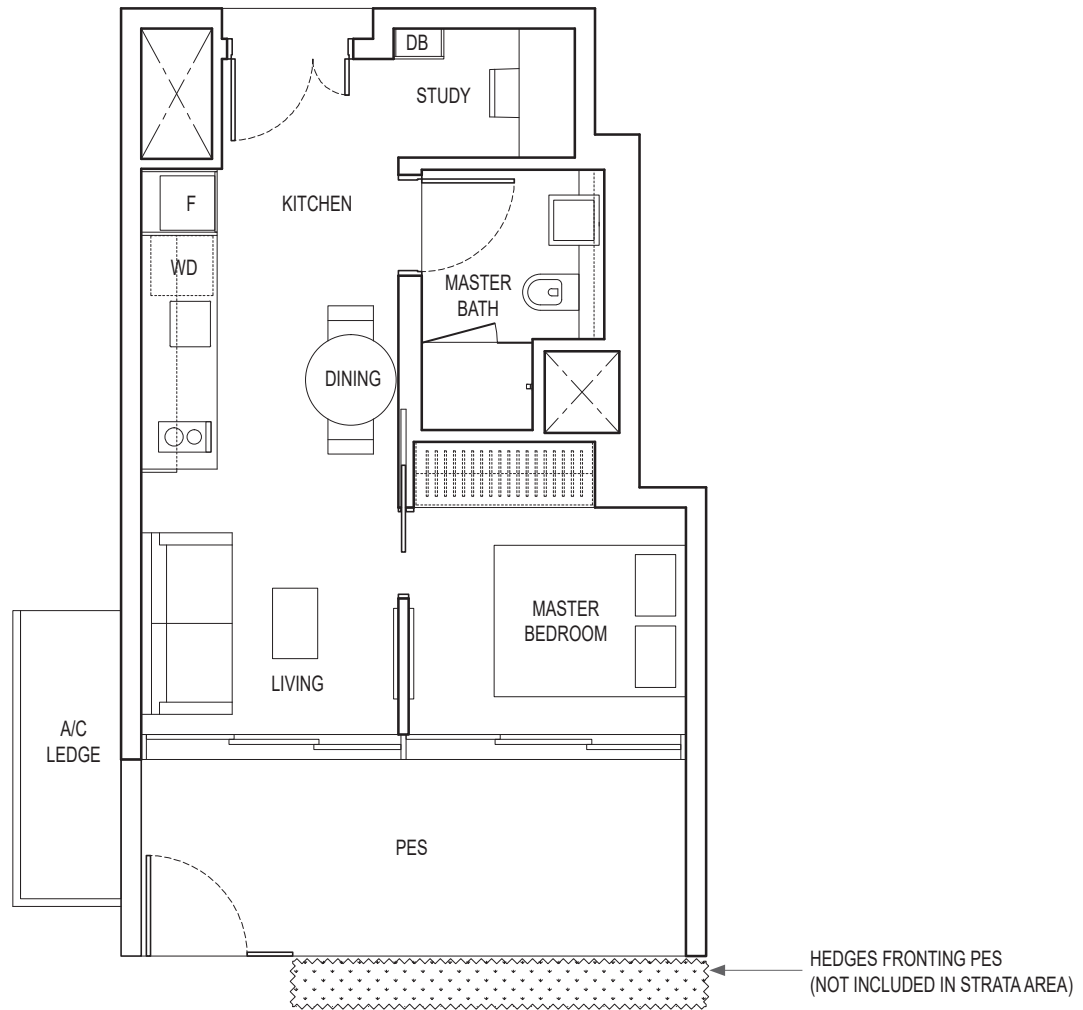


1-BEDROOM + STUDY

TYPE A1 PES

50 sq m / 538 sq ft

BLK 18A : #01-28



Area includes air-con (A/C) ledge, balcony and strata void area where applicable. Please refer to the key plan for orientation. The plans are subject to change as may be approved by relevant authorities. All floor plans are approximate measurements only and are subject to government re-survey. The balcony shall not be enclosed unless with the approved balcony screen.

DB: Distribution Box SC: Shoe Cabinet ST: Storage WIW: Walk-in-Wardrobe / Closet WD: Integrated Washer Dryer
 W&D: Washer and Dryer F: Fridge WC: Water Closet PES: Private Enclosed Space

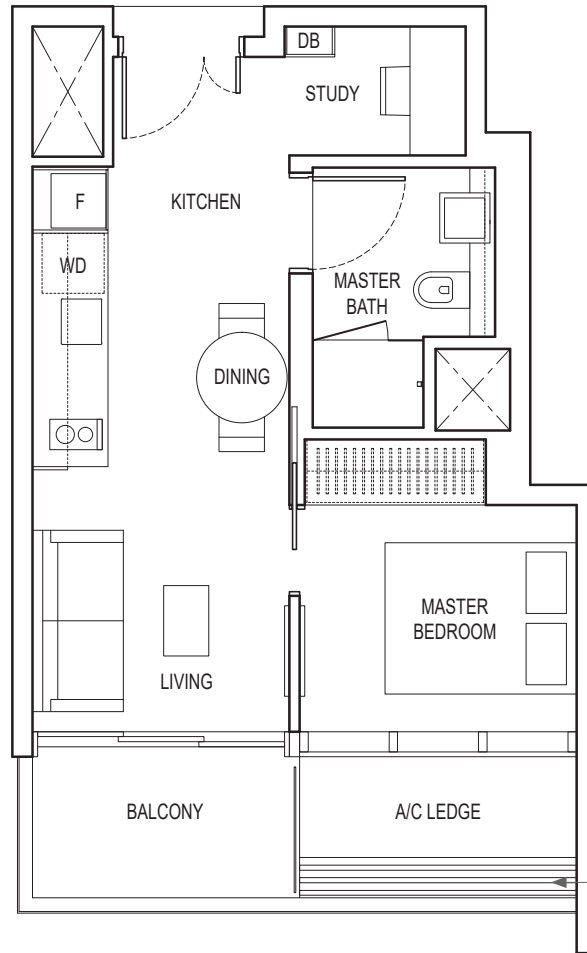
KEYPLAN IS NOT DRAWN TO SCALE

1-BEDROOM + STUDY

TYPE A1

43 sq m / 463 sq ft

BLK 18A : #02-28 to #19-28

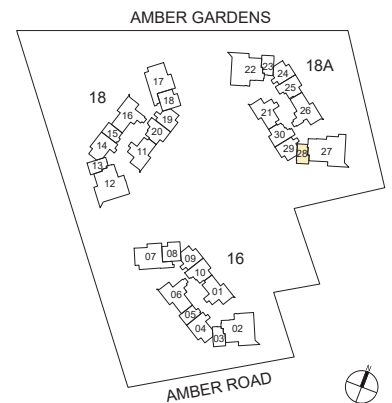


LIGHTWEIGHT ALUMINIUM TRELLIS FOR MAINTENANCE ACCESS ONLY (NOT INCLUDED IN STRATA AREA)



Area includes air-con (A/C) ledge, balcony and strata void area where applicable. Please refer to the key plan for orientation. The plans are subject to change as may be approved by relevant authorities. All floor plans are approximate measurements only and are subject to government re-survey. The balcony shall not be enclosed unless with the approved balcony screen.

DB: Distribution Box SC: Shoe Cabinet ST: Storage WIW: Walk-in-Wardrobe / Closet WD: Integrated Washer Dryer
 W&D: Washer and Dryer F: Fridge WC: Water Closet PES: Private Enclosed Space



KEYPLAN IS NOT DRAWN TO SCALE

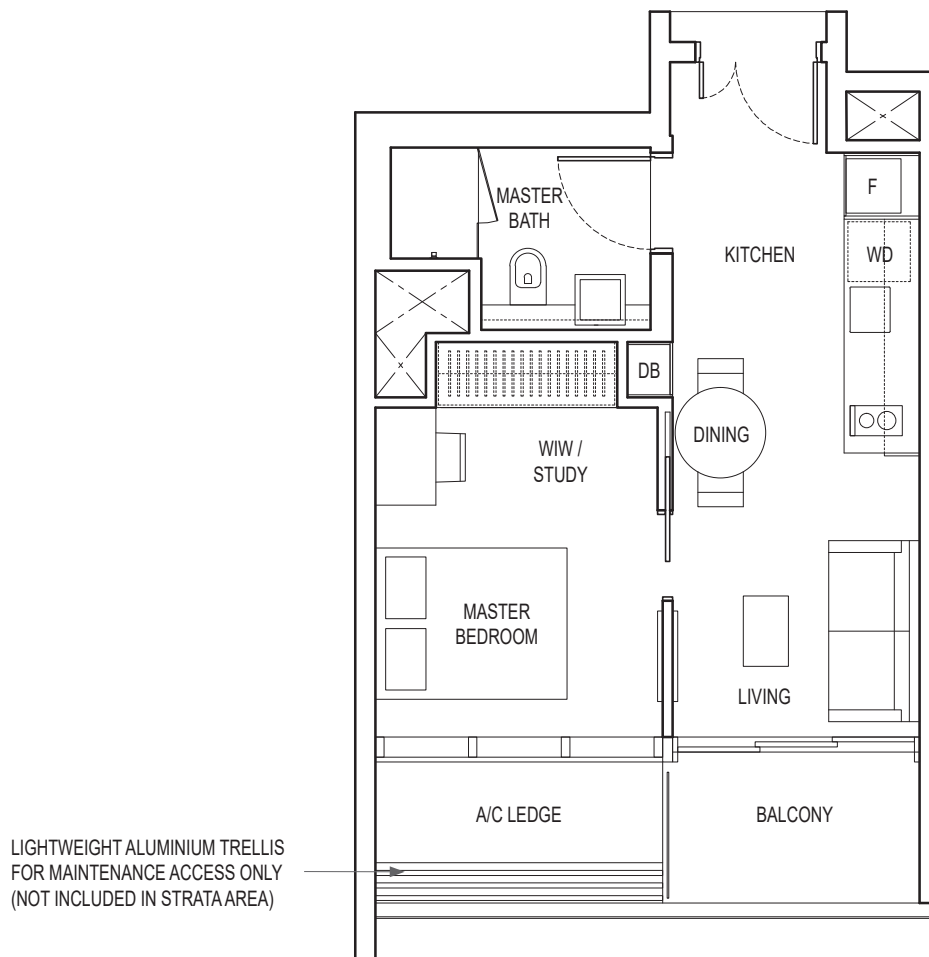
1-BEDROOM + ENSUITE STUDY

TYPE A2

43 sq m / 463 sq ft

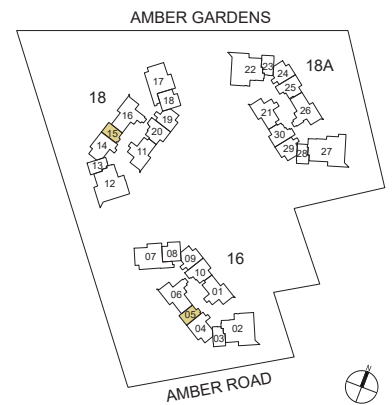
BLK 16 : #03-05 to #21-05

BLK 18 : #03-15 to #21-15



Area includes air-con (A/C) ledge, balcony and strata void area where applicable. Please refer to the key plan for orientation. The plans are subject to change as may be approved by relevant authorities. All floor plans are approximate measurements only and are subject to government re-survey. The balcony shall not be enclosed unless with the approved balcony screen.

DB: Distribution Box SC: Shoe Cabinet ST: Storage WIW: Walk-in-Wardrobe / Closet WD: Integrated Washer Dryer
 W&D: Washer and Dryer F: Fridge WC: Water Closet PES: Private Enclosed Space



KEYPLAN IS NOT DRAWN TO SCALE

1-BEDROOM + ENSUITE STUDY

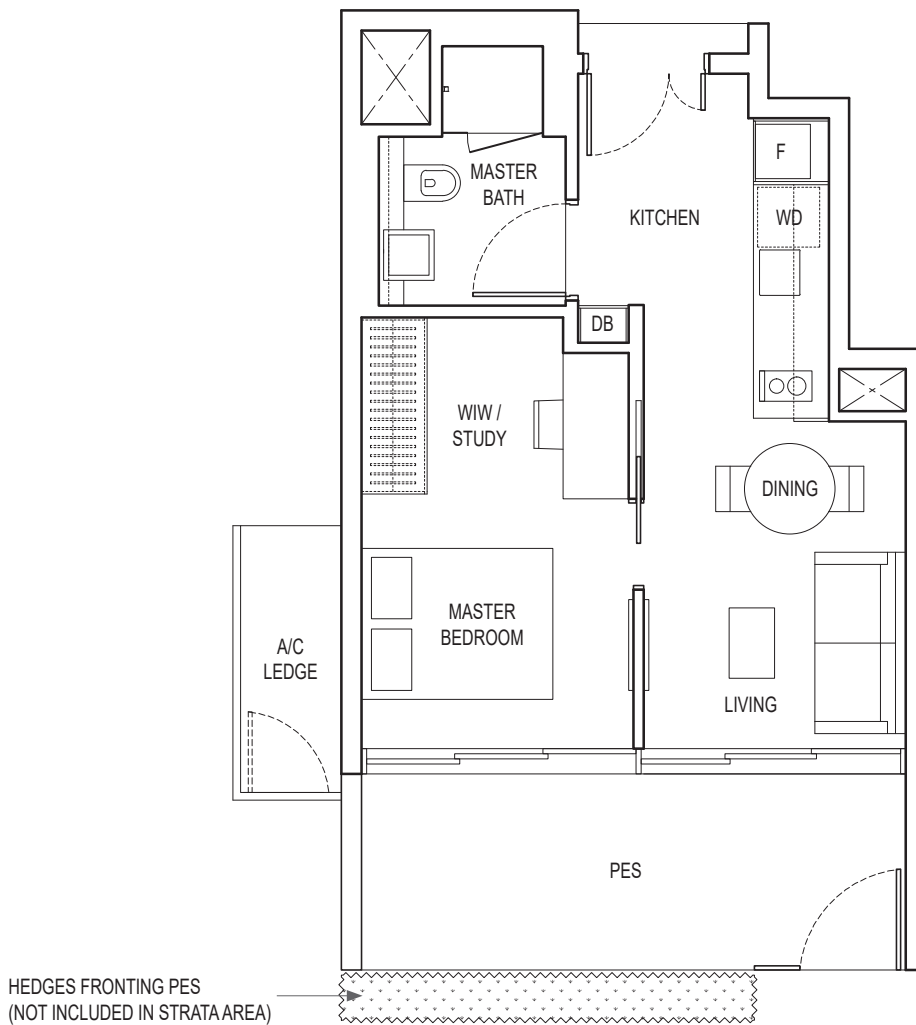
TYPE A3 PES

51 sq m / 549 sq ft

BLK 16 : #01-03

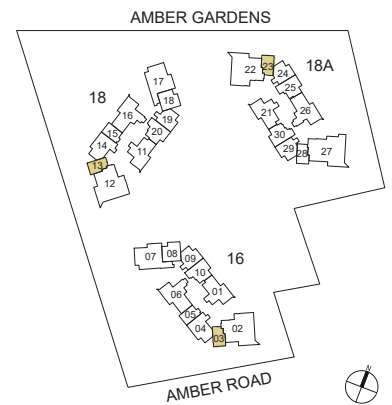
BLK 18 : #01-13

BLK 18A : #01-23



Area includes air-con (A/C) ledge, balcony and strata void area where applicable. Please refer to the key plan for orientation. The plans are subject to change as may be approved by relevant authorities. All floor plans are approximate measurements only and are subject to government re-survey. The balcony shall not be enclosed unless with the approved balcony screen.

DB: Distribution Box SC: Shoe Cabinet ST: Storage WIW: Walk-in-Wardrobe / Closet WD: Integrated Washer Dryer
 W&D: Washer and Dryer F: Fridge WC: Water Closet PES: Private Enclosed Space



KEYPLAN IS NOT DRAWN TO SCALE

1-BEDROOM + ENSUITE STUDY

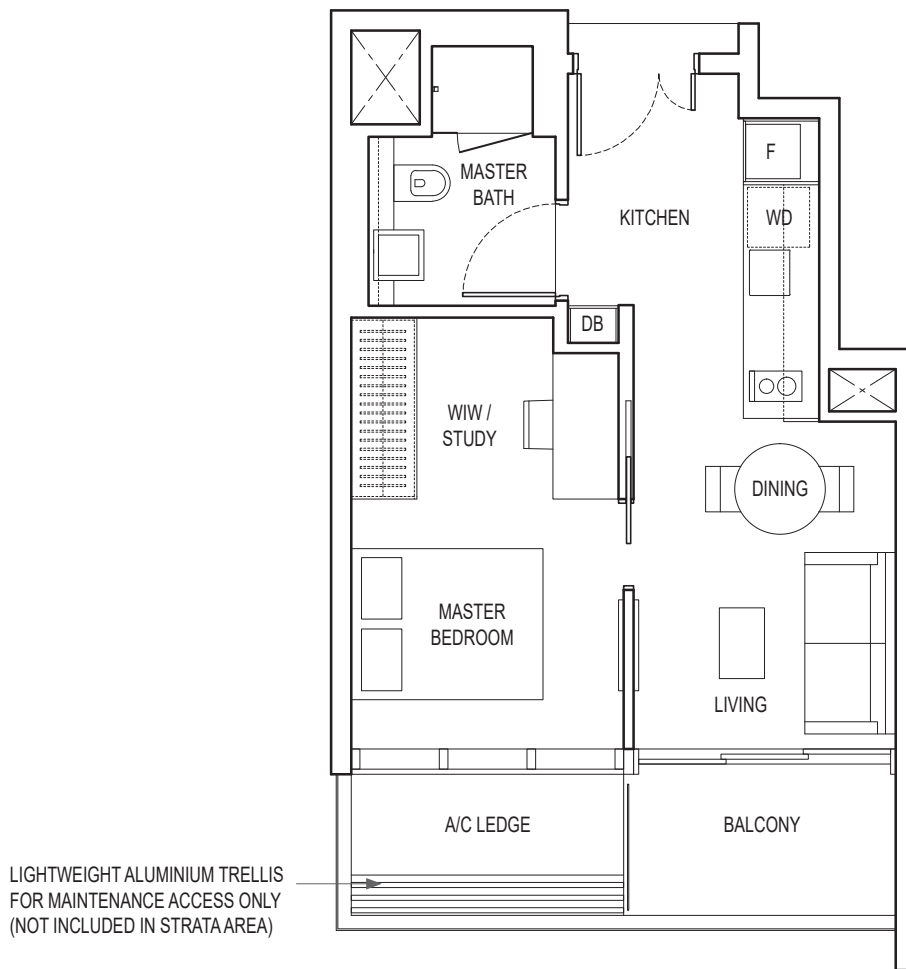
TYPE A3

45 sq m / 484 sq ft

BLK 16 : #02-03 to #19-03

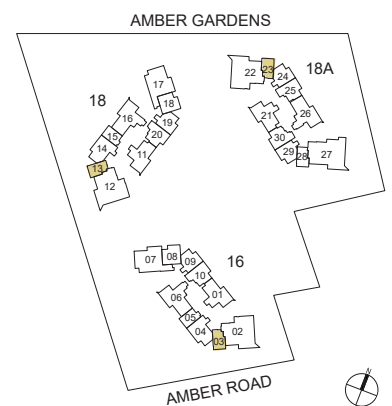
BLK 18 : #02-13 to #19-13

BLK 18A : #02-23 to #19-23



Area includes air-con (A/C) ledge, balcony and strata void area where applicable. Please refer to the key plan for orientation. The plans are subject to change as may be approved by relevant authorities. All floor plans are approximate measurements only and are subject to government re-survey. The balcony shall not be enclosed unless with the approved balcony screen.

DB: Distribution Box SC: Shoe Cabinet ST: Storage WIW: Walk-in-Wardrobe / Closet WD: Integrated Washer Dryer
 W&D: Washer and Dryer F: Fridge WC: Water Closet PES: Private Enclosed Space



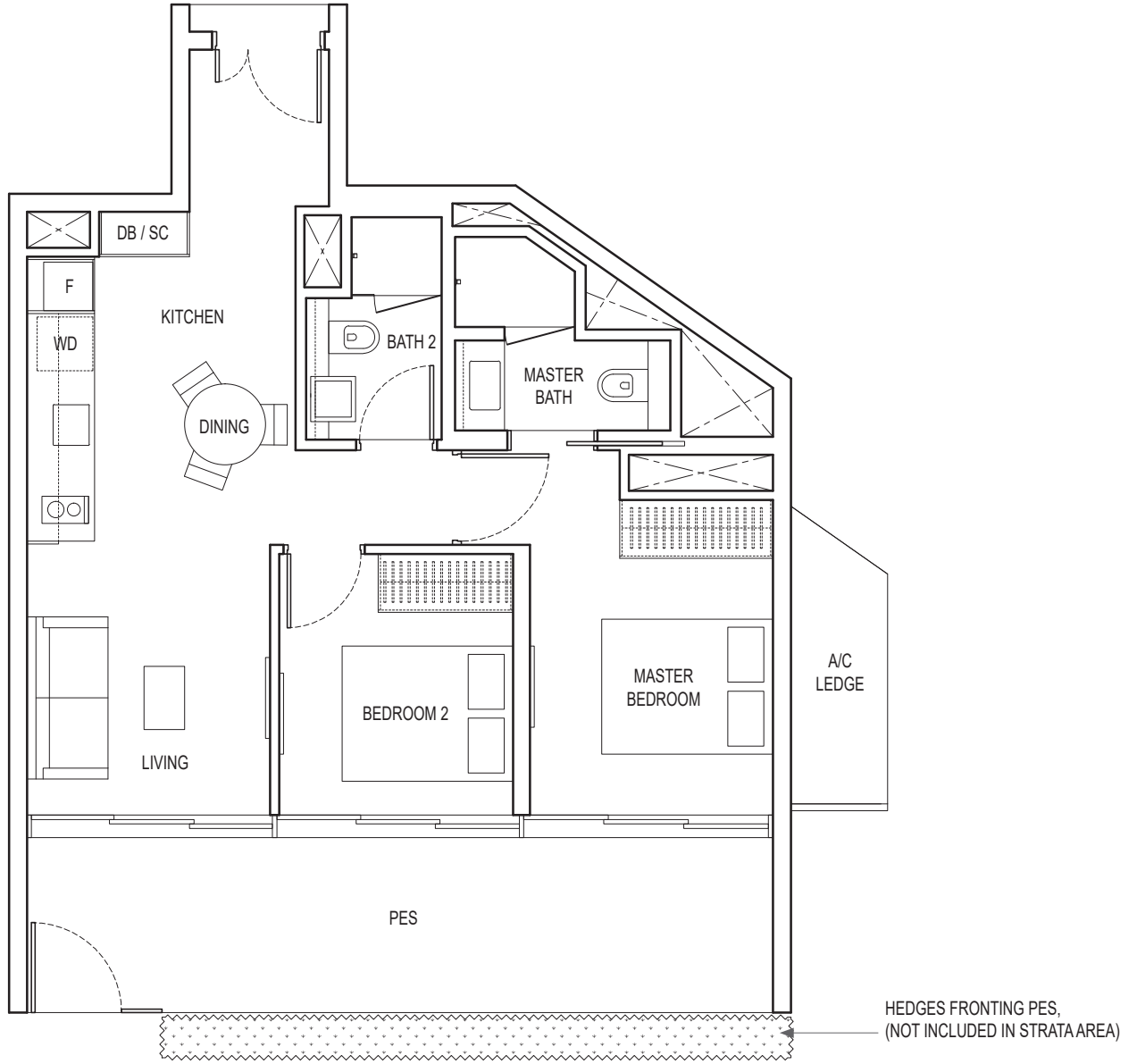
KEYPLAN IS NOT DRAWN TO SCALE

2-BEDROOM

TYPE B1 PES

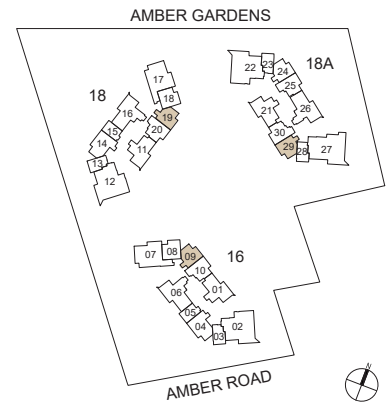
77 sq m / 829 sq ft

BLK 16 : #01-09
 BLK 18 : #01-19
 BLK 18A : #01-29



Area includes air-con (A/C) ledge, balcony and strata void area where applicable. Please refer to the key plan for orientation. The plans are subject to change as may be approved by relevant authorities. All floor plans are approximate measurements only and are subject to government re-survey. The balcony shall not be enclosed unless with the approved balcony screen.

DB: Distribution Box SC: Shoe Cabinet ST: Storage WIW: Walk-in-Wardrobe / Closet WD: Integrated Washer Dryer
 W&D: Washer and Dryer F: Fridge WC: Water Closet PES: Private Enclosed Space



KEYPLAN IS NOT DRAWN TO SCALE

2-BEDROOM

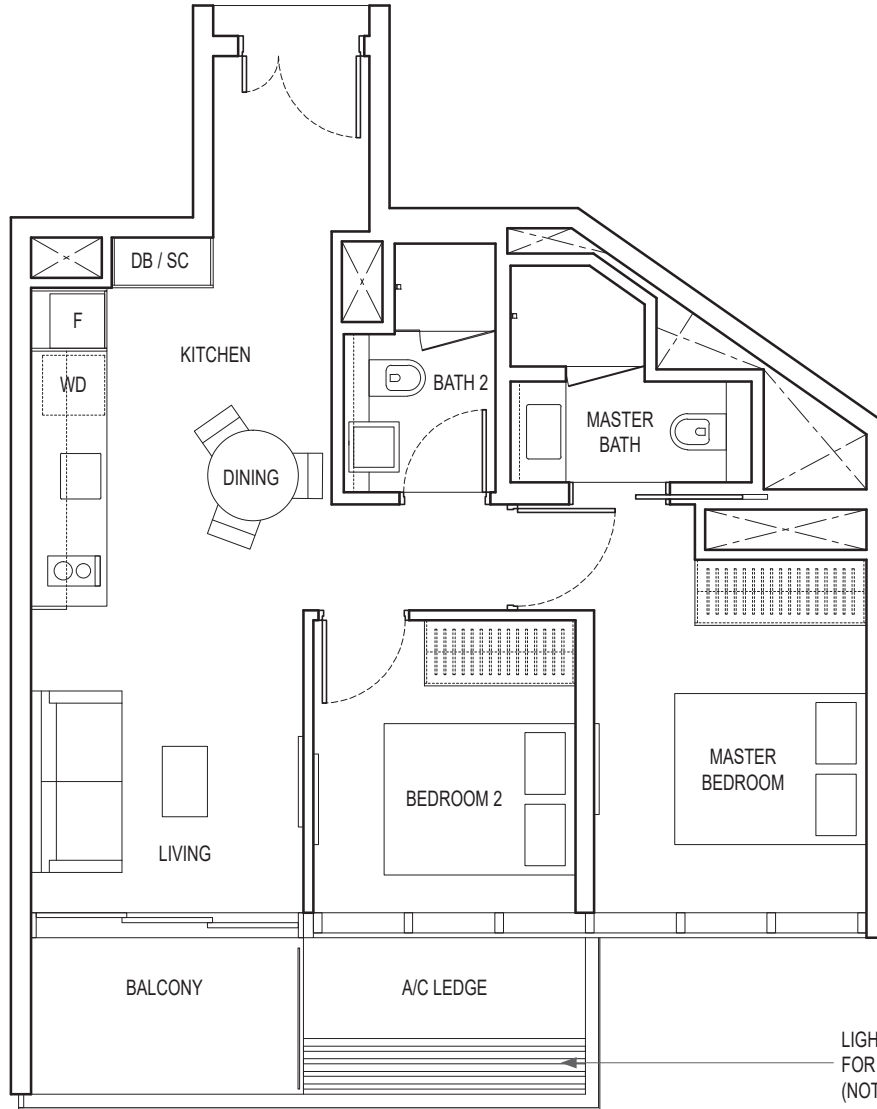
TYPE B1

65 sq m / 700 sq ft

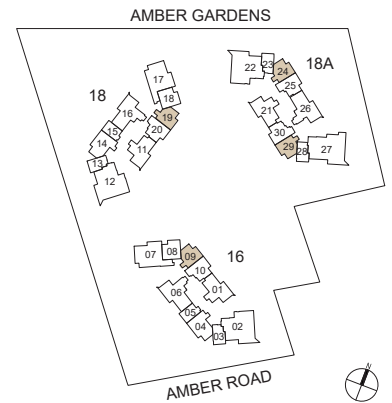
BLK 16 : #02-09 to #21-09

BLK 18 : #02-19 to #21-19

BLK 18A : #03-24 to #21-24, #02-29 to #21-29



LIGHTWEIGHT ALUMINIUM TRELLIS
FOR MAINTENANCE ACCESS ONLY
(NOT INCLUDED IN STRATA AREA)



KEYPLAN IS NOT DRAWN TO SCALE

Area includes air-con (A/C) ledge, balcony and strata void area where applicable. Please refer to the key plan for orientation. The plans are subject to change as may be approved by relevant authorities. All floor plans are approximate measurements only and are subject to government re-survey. The balcony shall not be enclosed unless with the approved balcony screen.

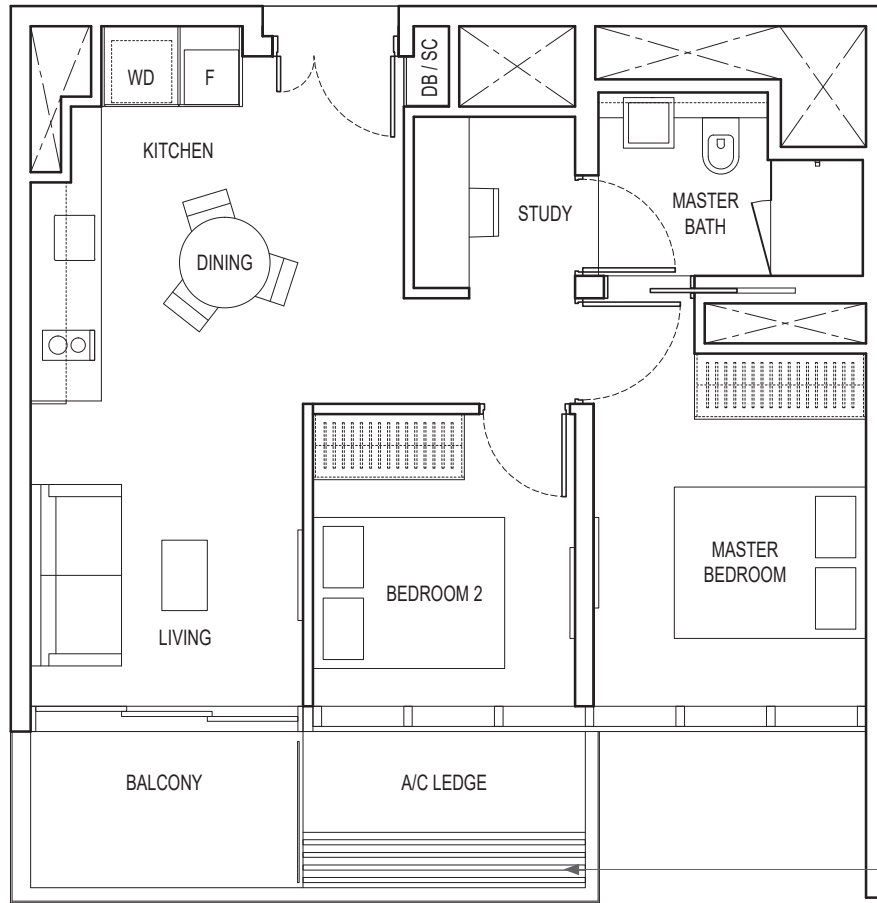
DB: Distribution Box SC: Shoe Cabinet ST: Storage WIW: Walk-in-Wardrobe / Closet WD: Integrated Washer Dryer
W&D: Washer and Dryer F: Fridge WC: Water Closet PES: Private Enclosed Space

2-BEDROOM + STUDY

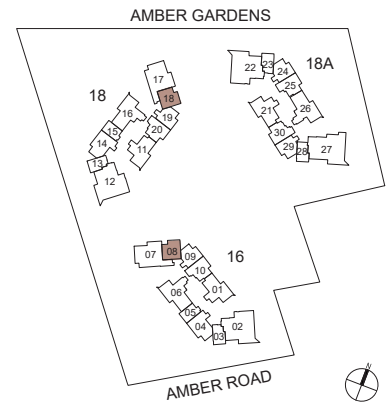
TYPE B2

63 sq m / 678 sq ft

BLK 16 : #03-08 to #21-08
 BLK 18 : #03-18 to #21-18



LIGHTWEIGHT ALUMINIUM TRELLIS FOR MAINTENANCE ACCESS ONLY (NOT INCLUDED IN STRATA AREA)



KEYPLAN IS NOT DRAWN TO SCALE

Area includes air-con (A/C) ledge, balcony and strata void area where applicable. Please refer to the key plan for orientation. The plans are subject to change as may be approved by relevant authorities. All floor plans are approximate measurements only and are subject to government re-survey. The balcony shall not be enclosed unless with the approved balcony screen.

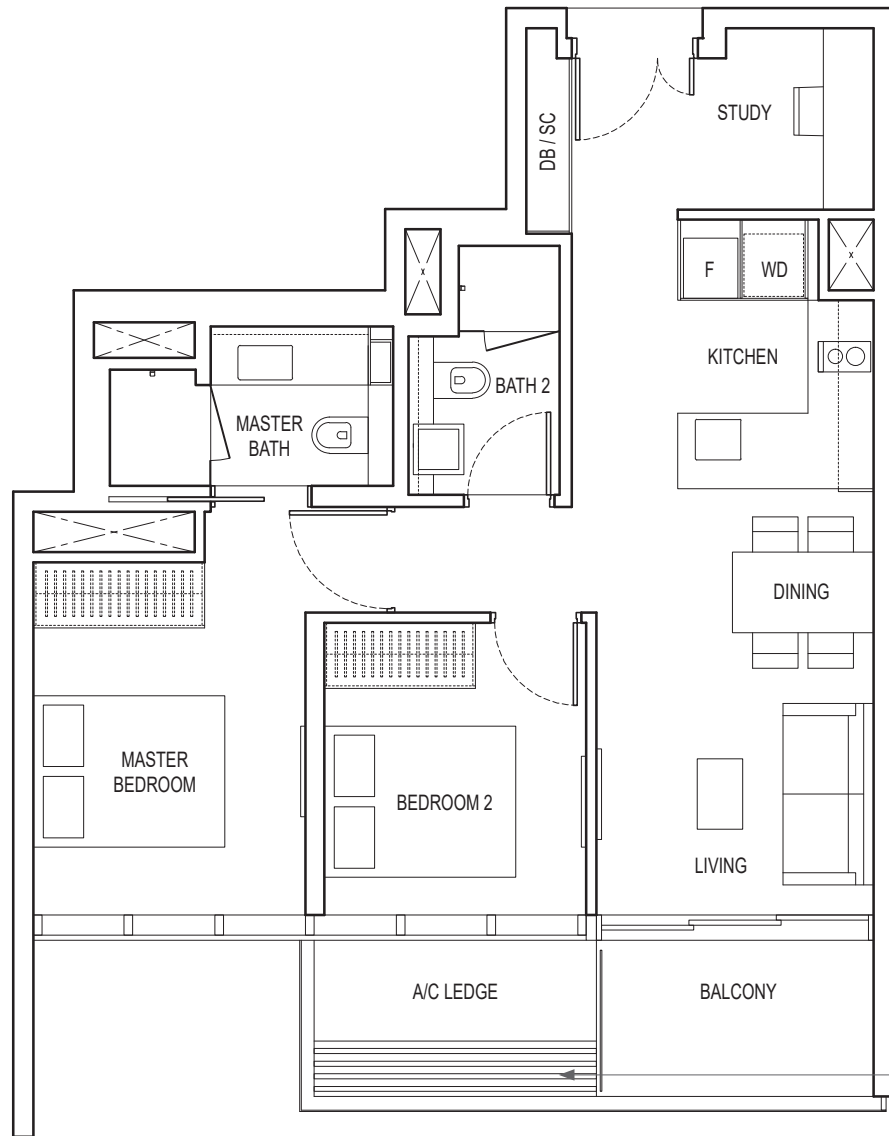
DB: Distribution Box SC: Shoe Cabinet ST: Storage WIW: Walk-in-Wardrobe / Closet WD: Integrated Washer Dryer
 W&D: Washer and Dryer F: Fridge WC: Water Closet PES: Private Enclosed Space

2-BEDROOM + STUDY

TYPE B3

70 sq m / 753 sq ft

BLK 18A : #03-25 to #21-25

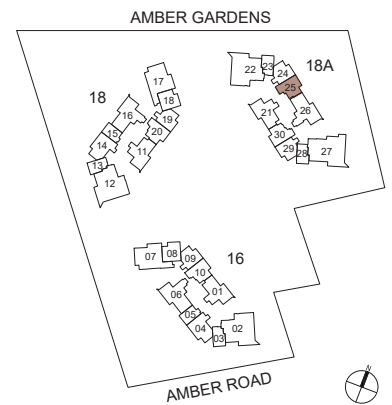


LIGHTWEIGHT ALUMINIUM TRELLIS FOR MAINTENANCE ACCESS ONLY (NOT INCLUDED IN STRATA AREA)



Area includes air-con (A/C) ledge, balcony and strata void area where applicable. Please refer to the key plan for orientation. The plans are subject to change as may be approved by relevant authorities. All floor plans are approximate measurements only and are subject to government re-survey. The balcony shall not be enclosed unless with the approved balcony screen.

DB: Distribution Box SC: Shoe Cabinet ST: Storage WIW: Walk-in-Wardrobe / Closet WD: Integrated Washer Dryer
 W&D: Washer and Dryer F: Fridge WC: Water Closet PES: Private Enclosed Space

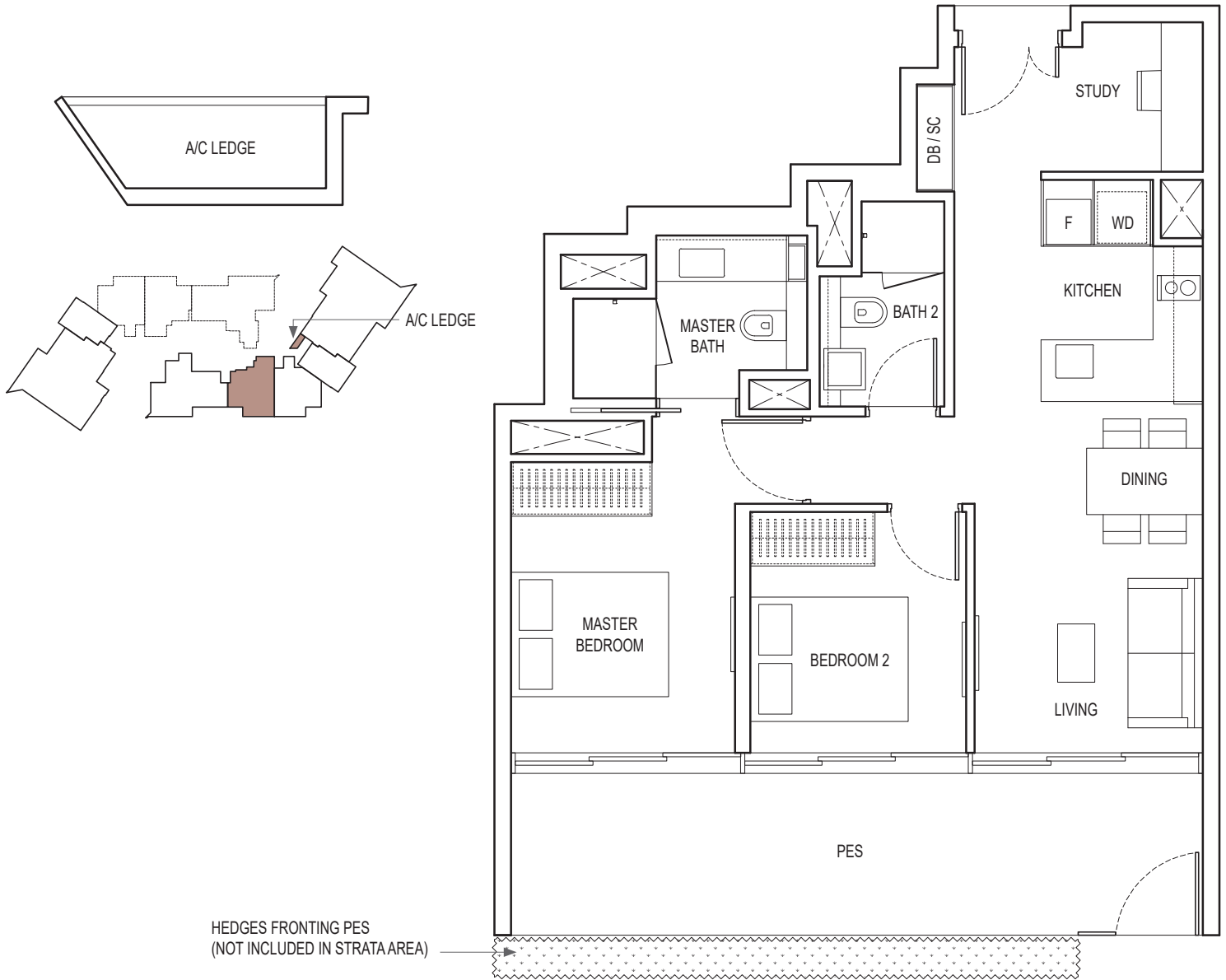


KEYPLAN IS NOT DRAWN TO SCALE

2-BEDROOM + STUDY

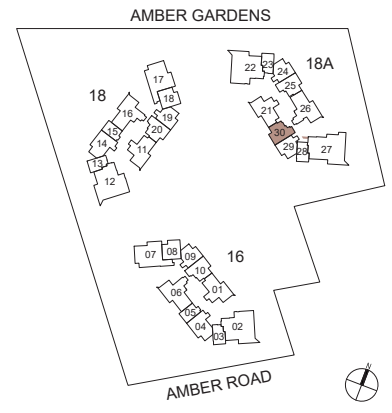
TYPE B4A PES

81 sq m / 872 sq ft
 BLK 18A : #01-30



Area includes air-con (A/C) ledge, balcony and strata void area where applicable. Please refer to the key plan for orientation. The plans are subject to change as may be approved by relevant authorities. All floor plans are approximate measurements only and are subject to government re-survey. The balcony shall not be enclosed unless with the approved balcony screen.

DB: Distribution Box SC: Shoe Cabinet ST: Storage WIW: Walk-in-Wardrobe / Closet WD: Integrated Washer Dryer
 W&D: Washer and Dryer F: Fridge WC: Water Closet PES: Private Enclosed Space



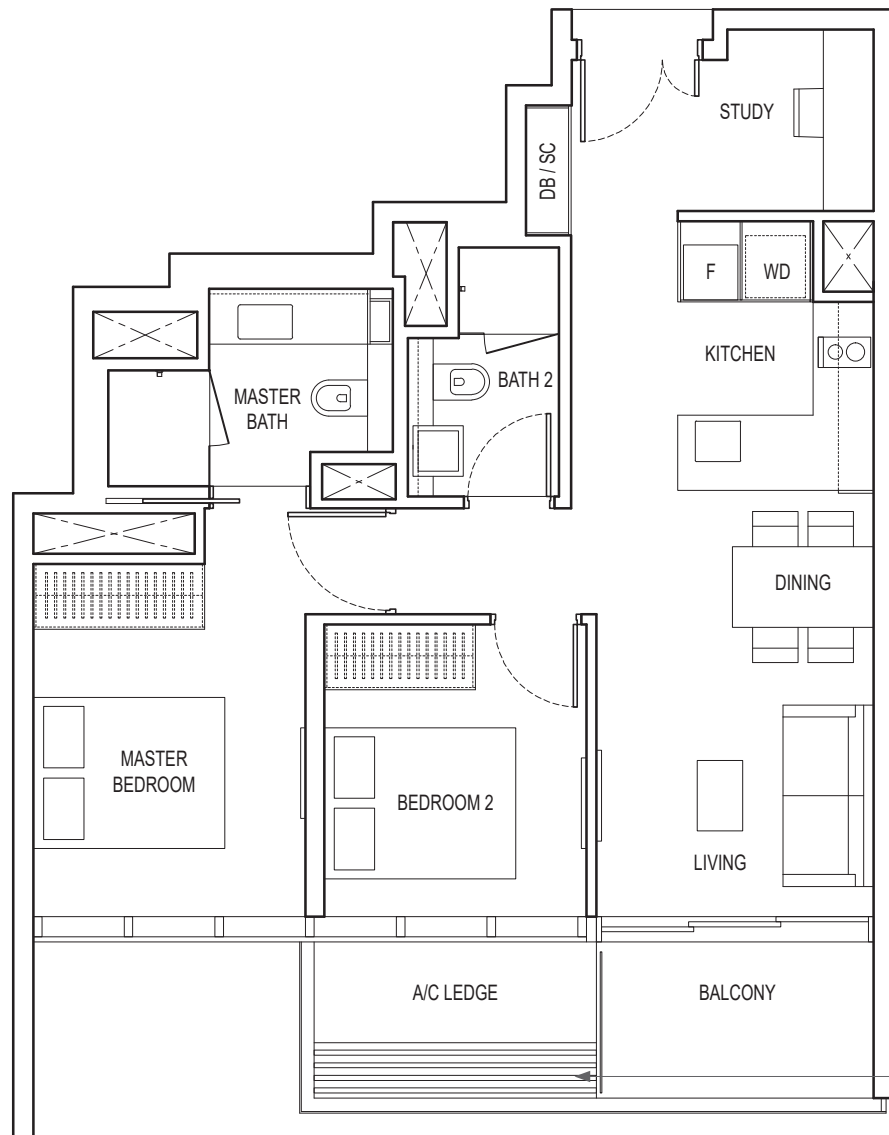
KEYPLAN IS NOT DRAWN TO SCALE

2-BEDROOM + STUDY

TYPE B4A

69 sq m / 743 sq ft

BLK 18A : #02-30 to #21-30

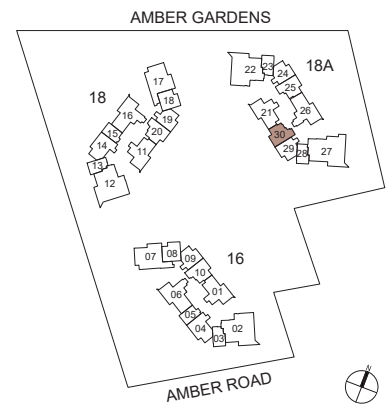


LIGHTWEIGHT ALUMINIUM TRELLIS FOR MAINTENANCE ACCESS ONLY (NOT INCLUDED IN STRATA AREA)



Area includes air-con (A/C) ledge, balcony and strata void area where applicable. Please refer to the key plan for orientation. The plans are subject to change as may be approved by relevant authorities. All floor plans are approximate measurements only and are subject to government re-survey. The balcony shall not be enclosed unless with the approved balcony screen.

DB: Distribution Box SC: Shoe Cabinet ST: Storage WIW: Walk-in-Wardrobe / Closet WD: Integrated Washer Dryer
 W&D: Washer and Dryer F: Fridge WC: Water Closet PES: Private Enclosed Space



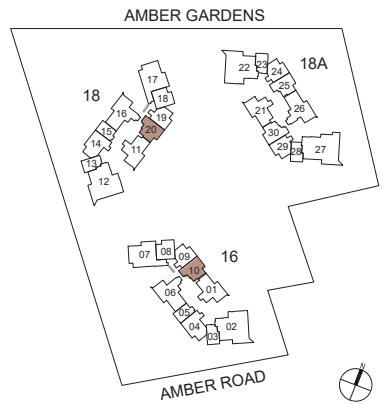
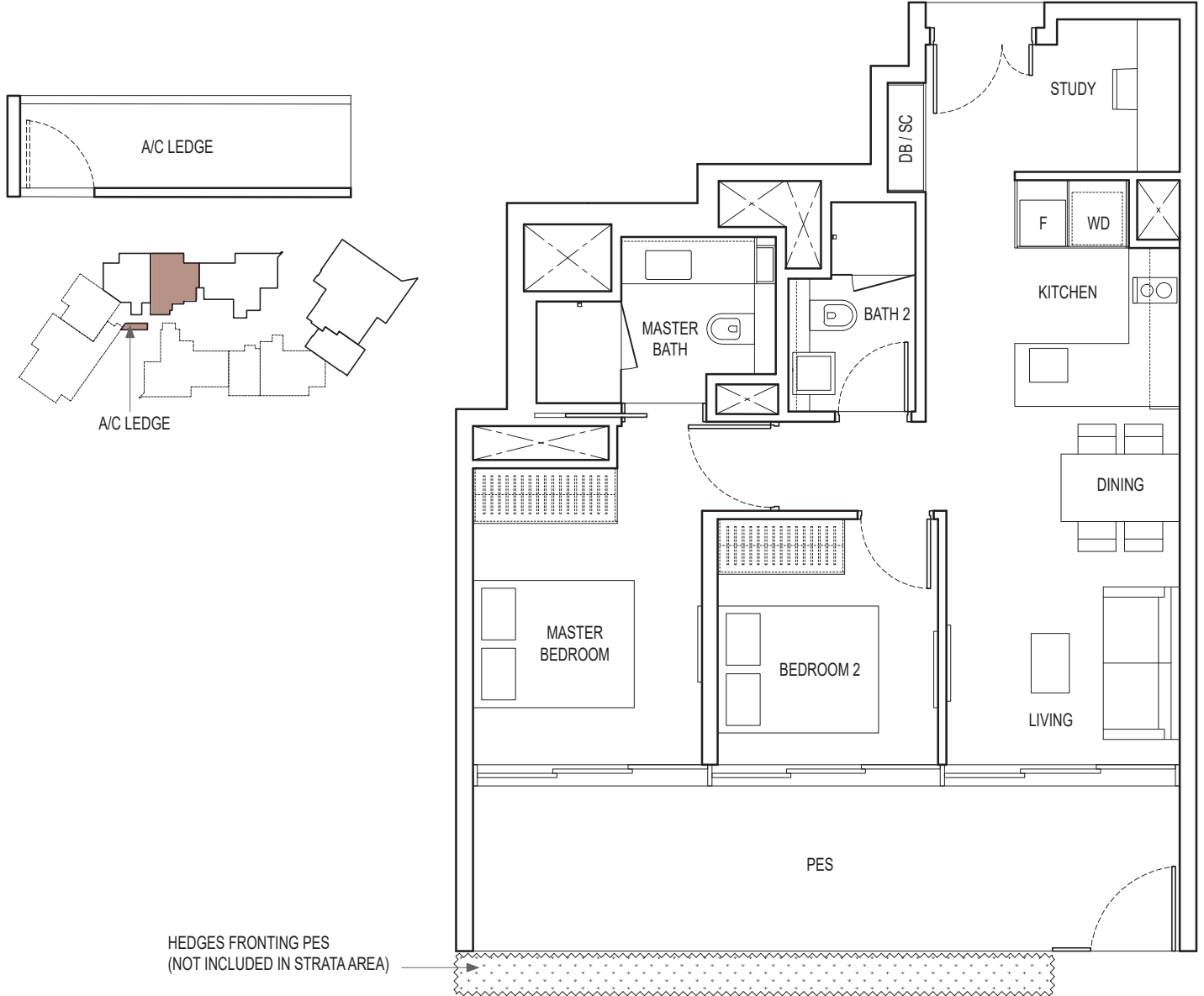
KEYPLAN IS NOT DRAWN TO SCALE

2-BEDROOM + STUDY

TYPE B4B PES

82 sq m / 883 sq ft

BLK 16 : #01-10
 BLK 18 : #01-20



Area includes air-con (A/C) ledge, balcony and strata void area where applicable. Please refer to the key plan for orientation. The plans are subject to change as may be approved by relevant authorities. All floor plans are approximate measurements only and are subject to government re-survey. The balcony shall not be enclosed unless with the approved balcony screen.

DB: Distribution Box SC: Shoe Cabinet ST: Storage WIW: Walk-in-Wardrobe / Closet WD: Integrated Washer Dryer
 W&D: Washer and Dryer F: Fridge WC: Water Closet PES: Private Enclosed Space

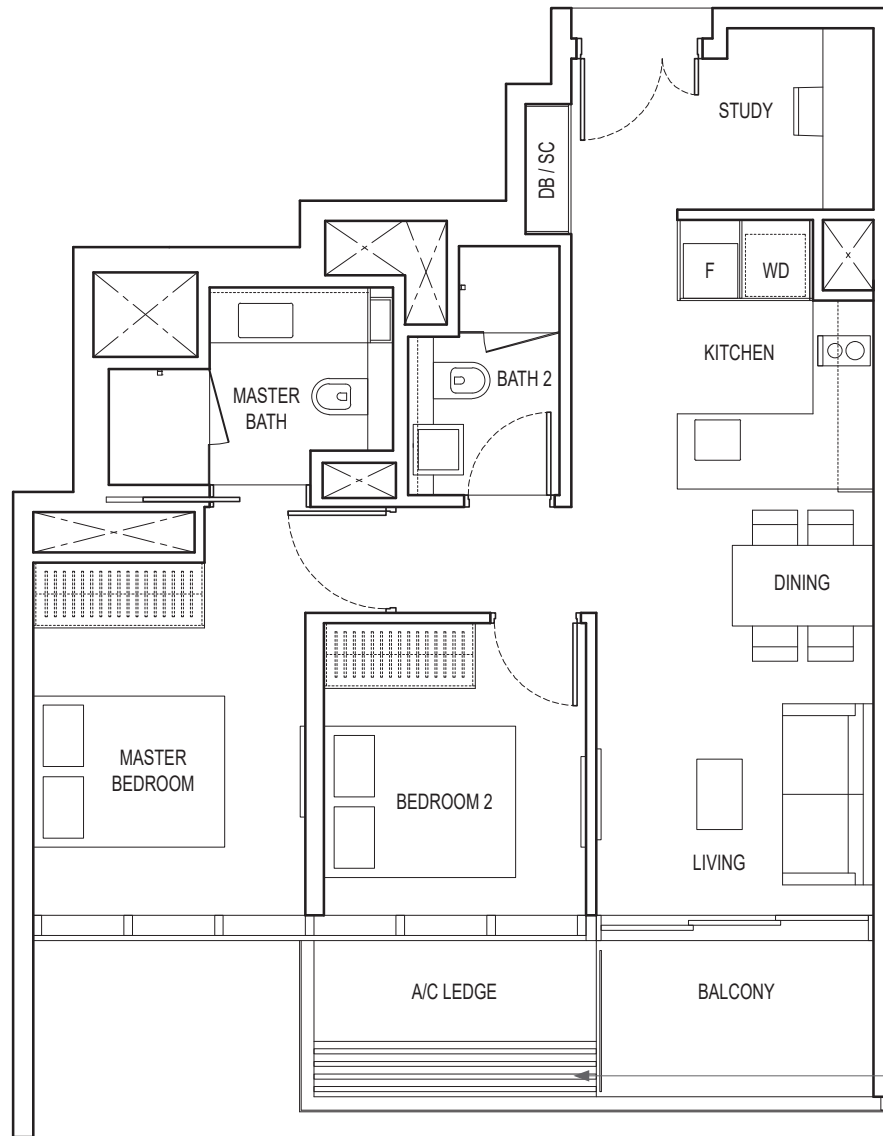
KEYPLAN IS NOT DRAWN TO SCALE

2-BEDROOM + STUDY

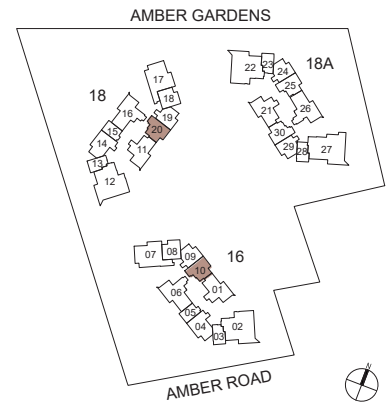
TYPE B4B

69 sq m / 743 sq ft

BLK 16 : #02-10 to #21-10
 BLK 18 : #02-20 to #21-20



LIGHTWEIGHT ALUMINIUM TRELLIS FOR MAINTENANCE ACCESS ONLY (NOT INCLUDED IN STRATA AREA)



KEYPLAN IS NOT DRAWN TO SCALE

Area includes air-con (A/C) ledge, balcony and strata void area where applicable. Please refer to the key plan for orientation. The plans are subject to change as may be approved by relevant authorities. All floor plans are approximate measurements only and are subject to government re-survey. The balcony shall not be enclosed unless with the approved balcony screen.

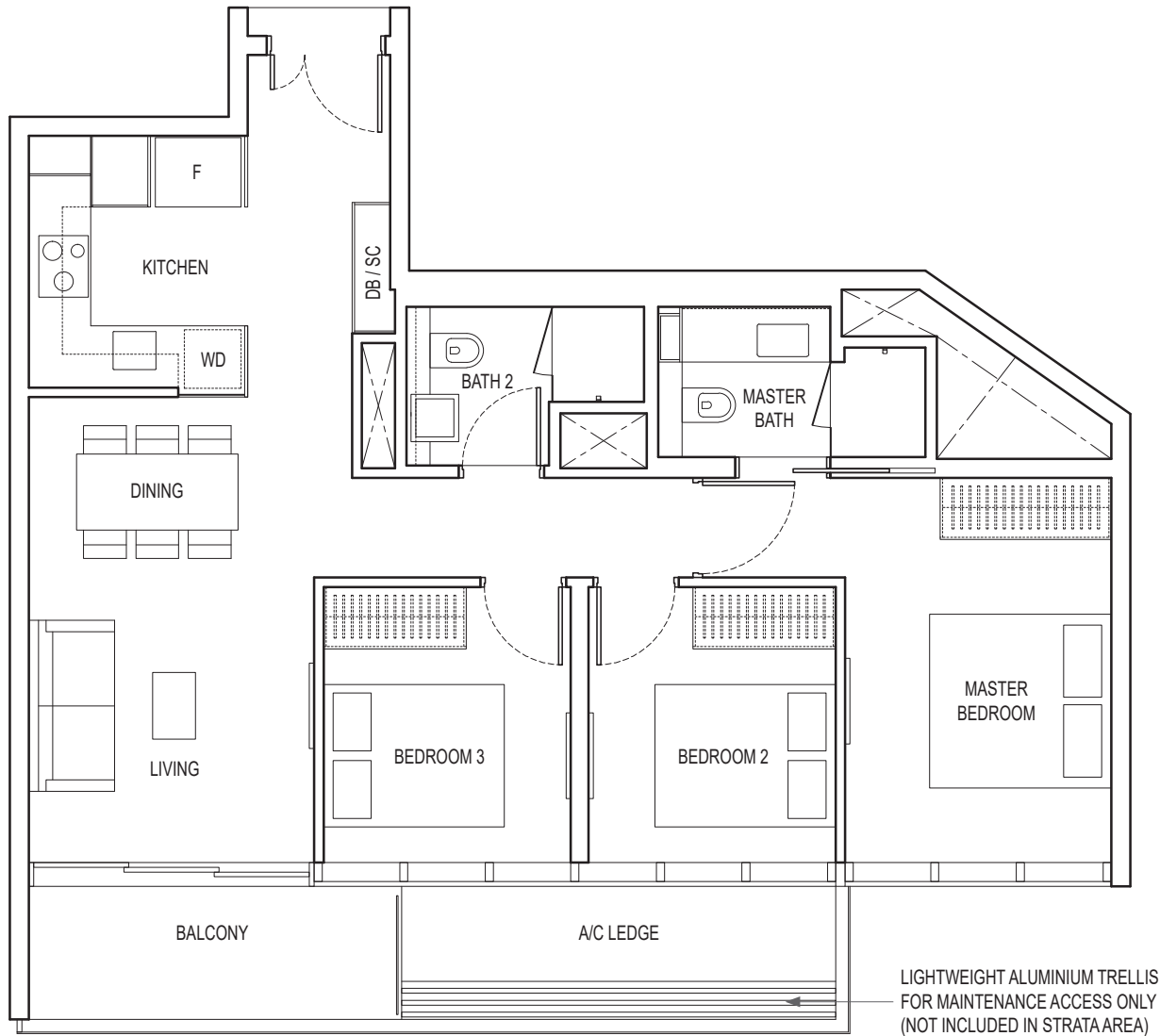
DB: Distribution Box SC: Shoe Cabinet ST: Storage WIW: Walk-in-Wardrobe / Closet WD: Integrated Washer Dryer
 W&D: Washer and Dryer F: Fridge WC: Water Closet PES: Private Enclosed Space

3-BEDROOM

TYPE C1

88 sq m / 947 sq ft

BLK 16 : #03-04 to #21-04
 BLK 18 : #03-14 to #21-14

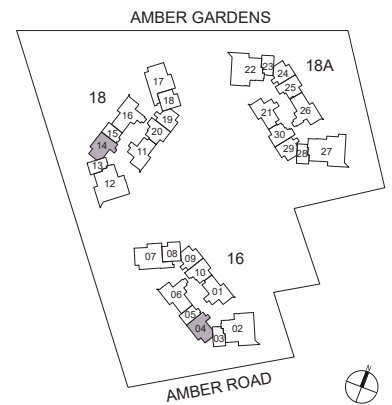


LIGHTWEIGHT ALUMINIUM TRELLIS FOR MAINTENANCE ACCESS ONLY (NOT INCLUDED IN STRATA AREA)



Area includes air-con (A/C) ledge, balcony and strata void area where applicable. Please refer to the key plan for orientation. The plans are subject to change as may be approved by relevant authorities. All floor plans are approximate measurements only and are subject to government re-survey. The balcony shall not be enclosed unless with the approved balcony screen.

DB: Distribution Box SC: Shoe Cabinet ST: Storage WIW: Walk-in-Wardrobe / Closet WD: Integrated Washer Dryer
 W&D: Washer and Dryer F: Fridge WC: Water Closet PES: Private Enclosed Space



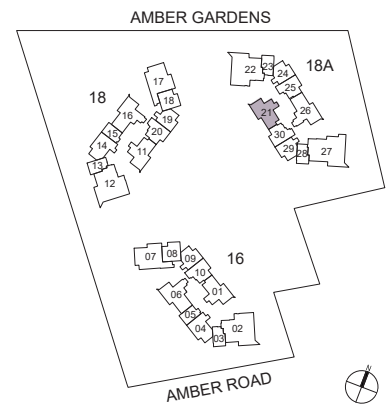
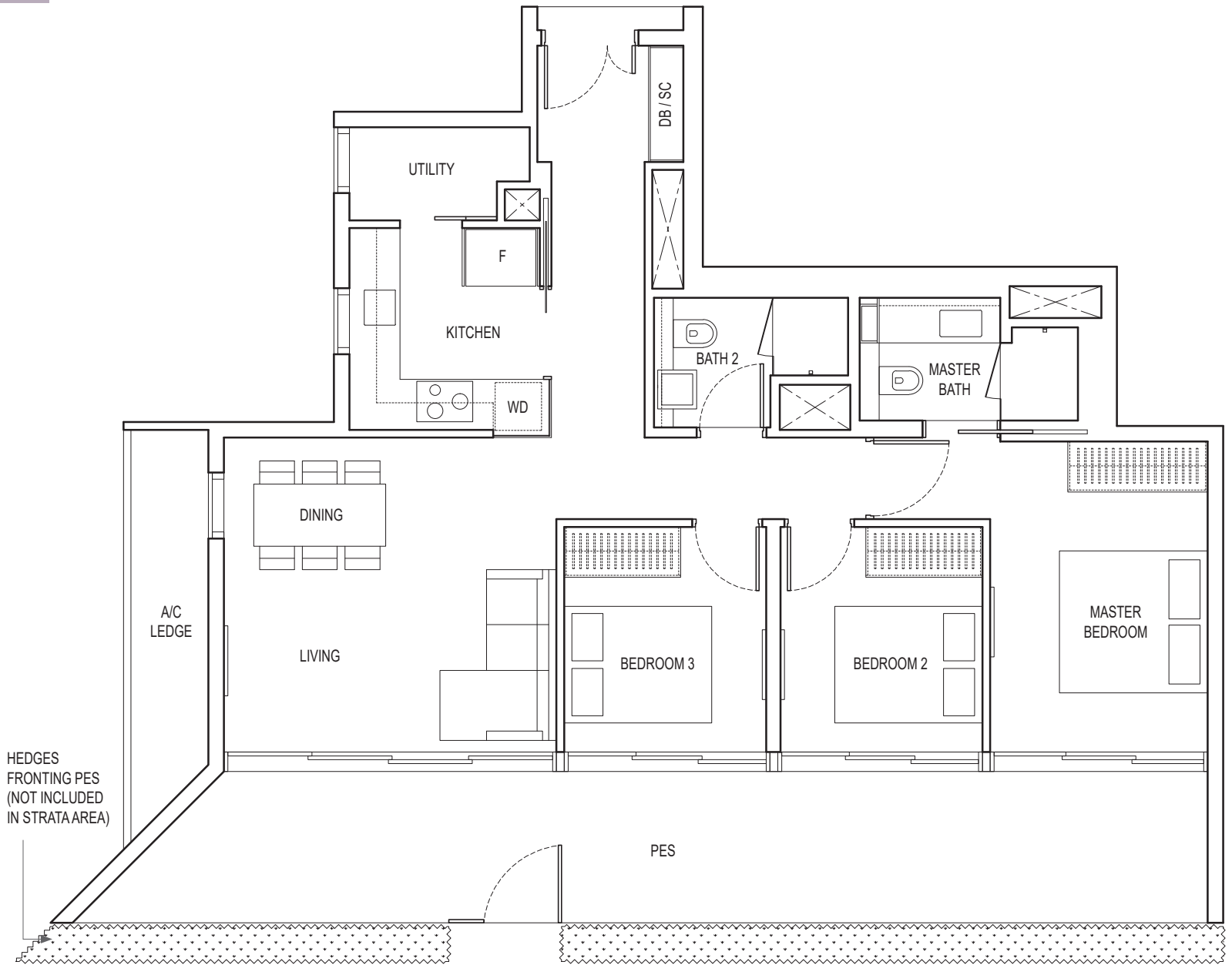
KEYPLAN IS NOT DRAWN TO SCALE

3-BEDROOM

TYPE C2A PES

118 sq m / 1270 sq ft

BLK 18A : #01-21



Area includes air-con (A/C) ledge, balcony and strata void area where applicable. Please refer to the key plan for orientation. The plans are subject to change as may be approved by relevant authorities. All floor plans are approximate measurements only and are subject to government re-survey. The balcony shall not be enclosed unless with the approved balcony screen.

DB: Distribution Box SC: Shoe Cabinet ST: Storage WIW: Walk-in-Wardrobe / Closet WD: Integrated Washer Dryer
 W&D: Washer and Dryer F: Fridge WC: Water Closet PES: Private Enclosed Space

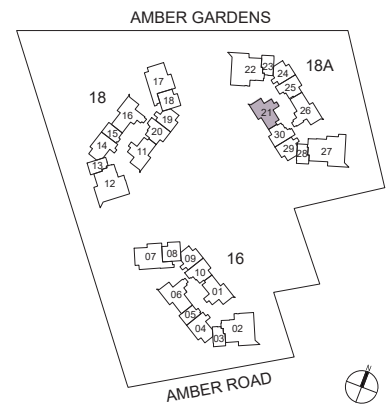
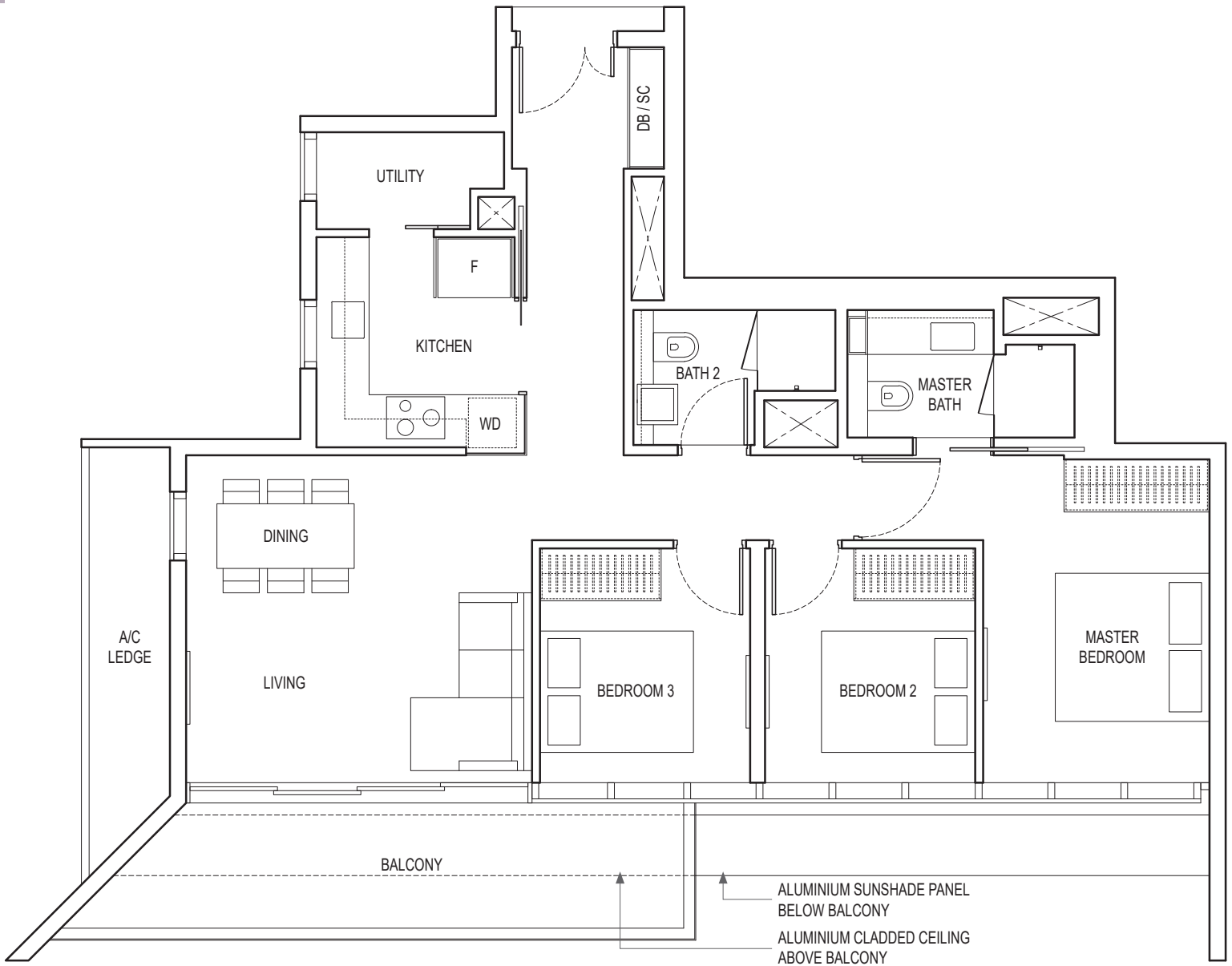
KEYPLAN IS NOT DRAWN TO SCALE

3-BEDROOM

TYPE C2A

103 sq m / 1109 sq ft

BLK 18A : #02-21 to #21-21



Area includes air-con (A/C) ledge, balcony and strata void area where applicable. Please refer to the key plan for orientation. The plans are subject to change as may be approved by relevant authorities. All floor plans are approximate measurements only and are subject to government re-survey. The balcony shall not be enclosed unless with the approved balcony screen.

DB: Distribution Box SC: Shoe Cabinet ST: Storage WIW: Walk-in-Wardrobe / Closet WD: Integrated Washer Dryer
 W&D: Washer and Dryer F: Fridge WC: Water Closet PES: Private Enclosed Space

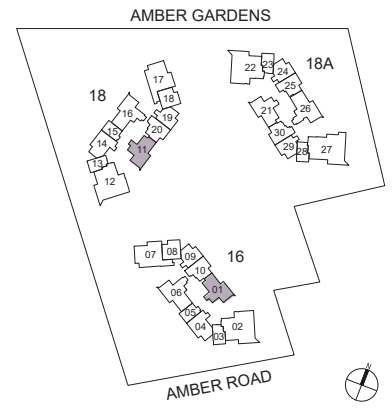
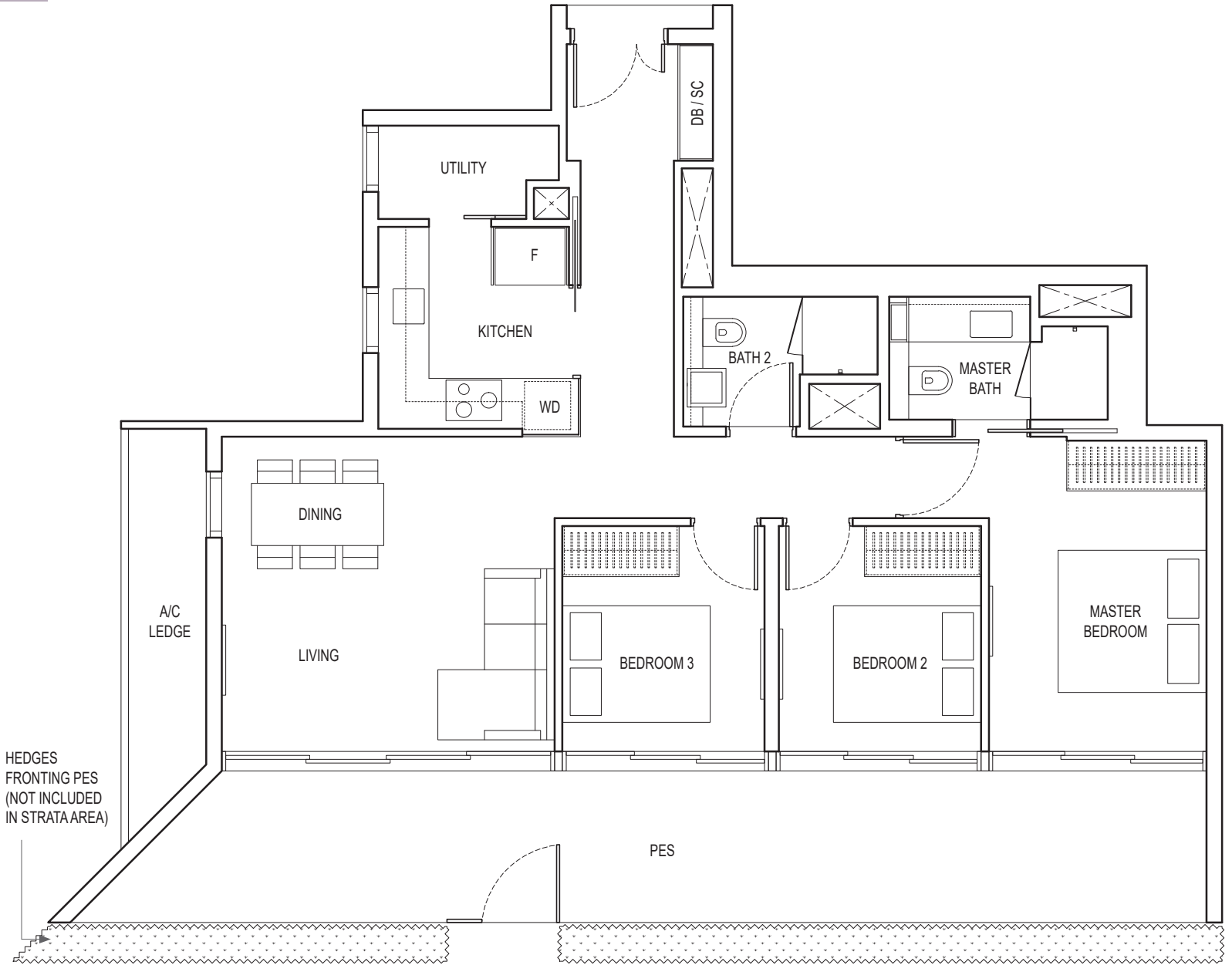
KEYPLAN IS NOT DRAWN TO SCALE

3-BEDROOM

TYPE C2B PES

118 sq m / 1270 sq ft

BLK 16 : #01-01
BLK 18 : #01-11



Area includes air-con (A/C) ledge, balcony and strata void area where applicable. Please refer to the key plan for orientation. The plans are subject to change as may be approved by relevant authorities. All floor plans are approximate measurements only and are subject to government re-survey. The balcony shall not be enclosed unless with the approved balcony screen.

DB: Distribution Box SC: Shoe Cabinet ST: Storage WIW: Walk-in-Wardrobe / Closet WD: Integrated Washer Dryer
W&D: Washer and Dryer F: Fridge WC: Water Closet PES: Private Enclosed Space

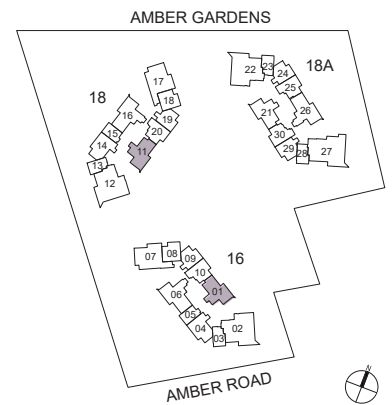
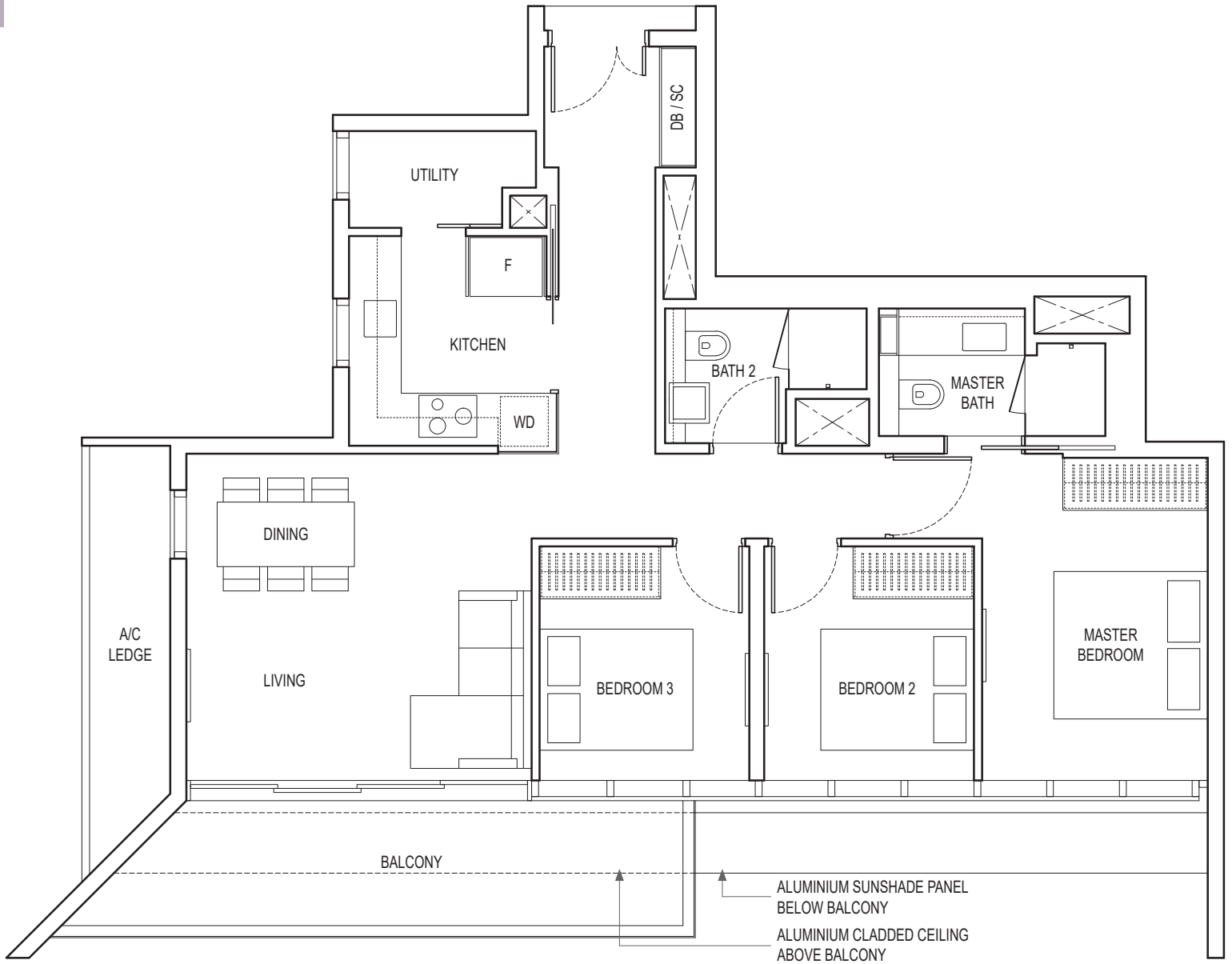
KEYPLAN IS NOT DRAWN TO SCALE

3-BEDROOM

TYPE C2B

103 sq m / 1109 sq ft

BLK 16 : #02-01 to #21-01
 BLK 18 : #02-11 to #21-11



Area includes air-con (A/C) ledge, balcony and strata void area where applicable. Please refer to the key plan for orientation. The plans are subject to change as may be approved by relevant authorities. All floor plans are approximate measurements only and are subject to government re-survey. The balcony shall not be enclosed unless with the approved balcony screen.

DB: Distribution Box SC: Shoe Cabinet ST: Storage WIW: Walk-in-Wardrobe / Closet WD: Integrated Washer Dryer
 W&D: Washer and Dryer F: Fridge WC: Water Closet PES: Private Enclosed Space

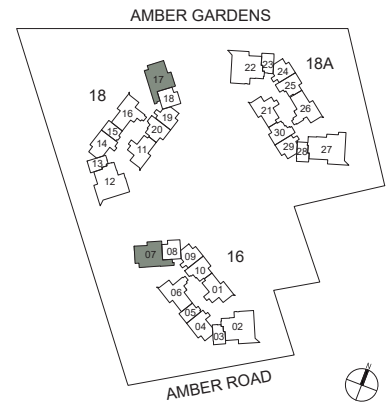
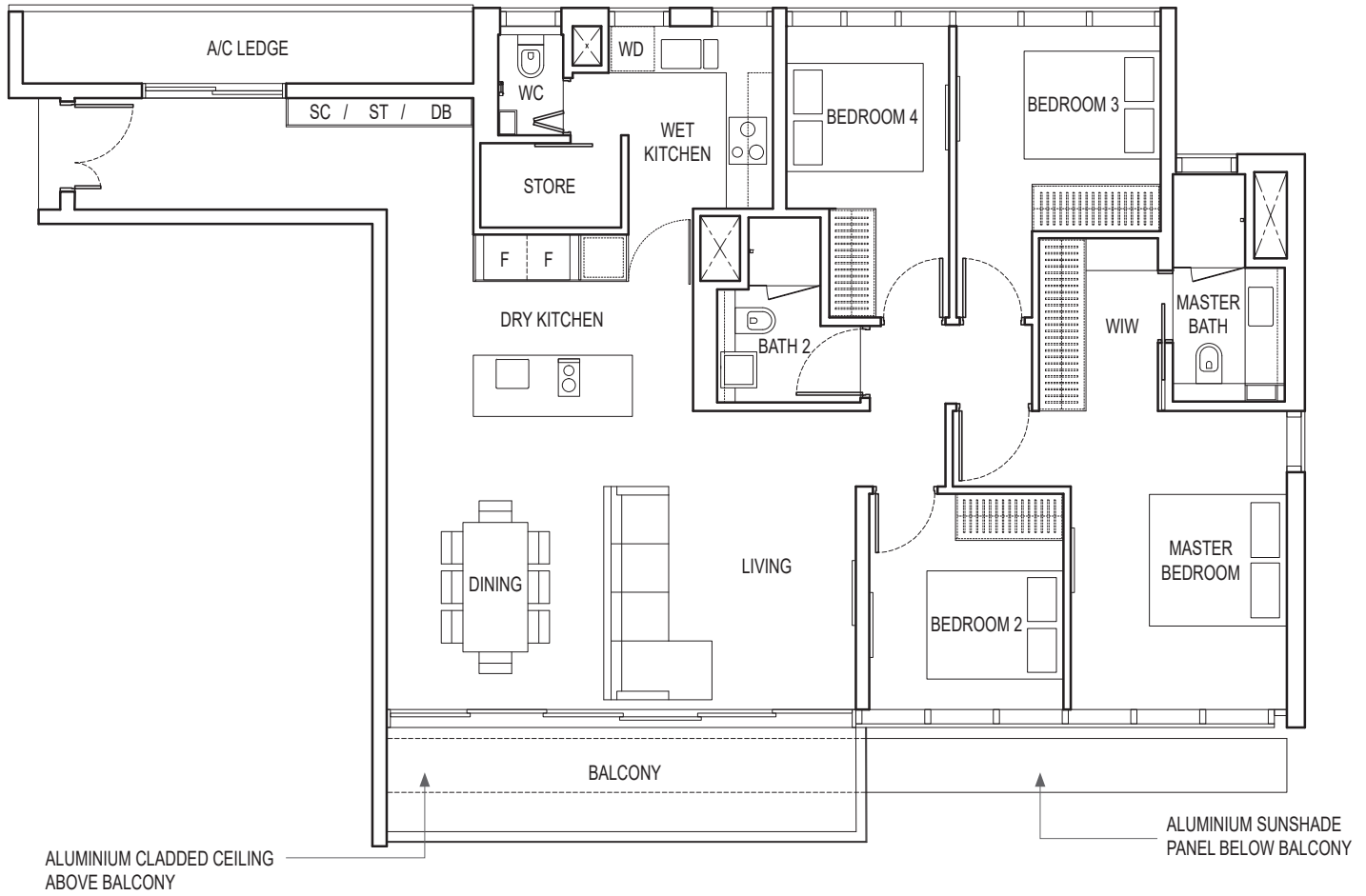
KEYPLAN IS NOT DRAWN TO SCALE

4-BEDROOM

TYPE D1

146 sq m / 1572 sq ft

BLK 16 : #03-07 to #21-07
 BLK 18 : #03-17 to #21-17



Area includes air-con (A/C) ledge, balcony and strata void area where applicable. Please refer to the key plan for orientation. The plans are subject to change as may be approved by relevant authorities. All floor plans are approximate measurements only and are subject to government re-survey. The balcony shall not be enclosed unless with the approved balcony screen.

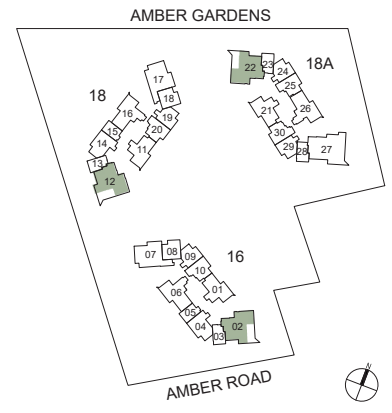
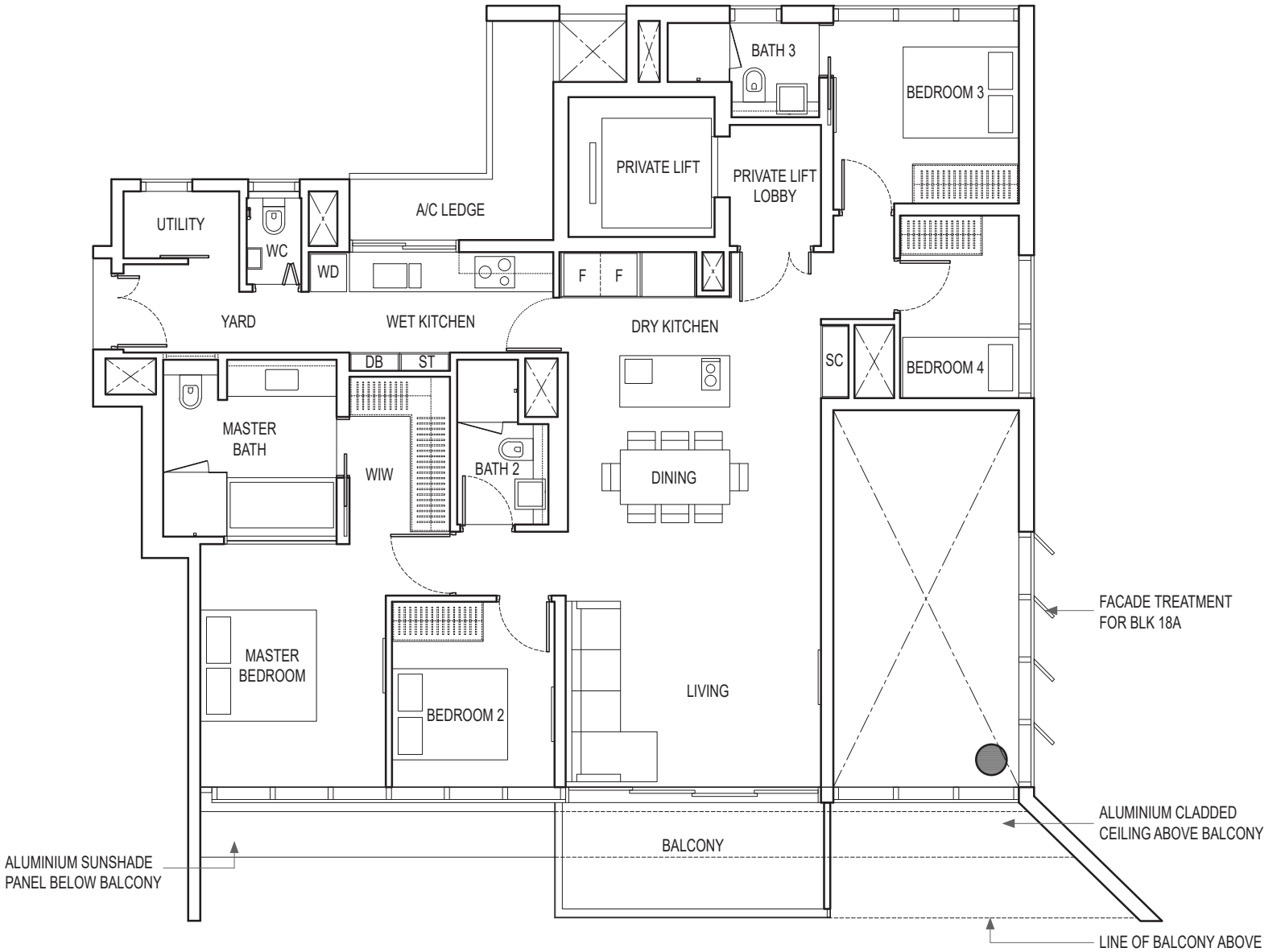
DB: Distribution Box SC: Shoe Cabinet ST: Storage WIW: Walk-in-Wardrobe / Closet WD: Integrated Washer Dryer
 W&D: Washer and Dryer F: Fridge WC: Water Closet PES: Private Enclosed Space

KEYPLAN IS NOT DRAWN TO SCALE

4-BEDROOM PREMIUM TYPE D2

147 sq m / 1582 sq ft

- BLK 16 : #03-02, #05-02, #07-02, #09-02, #11-02, #13-02, #15-02, #17-02, #19-02
- BLK 18 : #03-12, #05-12, #07-12, #09-12, #11-12, #13-12, #15-12, #17-12, #19-12
- BLK 18A : #03-22, #05-22, #07-22, #09-22, #11-22, #13-22, #15-22, #17-22, #19-22



Area includes air-con (A/C) ledge, balcony and strata void area where applicable. Please refer to the key plan for orientation. The plans are subject to change as may be approved by relevant authorities. All floor plans are approximate measurements only and are subject to government re-survey. The balcony shall not be enclosed unless with the approved balcony screen.

DB: Distribution Box SC: Shoe Cabinet ST: Storage WIW: Walk-in-Wardrobe / Closet WD: Integrated Washer Dryer
 W&D: Washer and Dryer F: Fridge WC: Water Closet PES: Private Enclosed Space

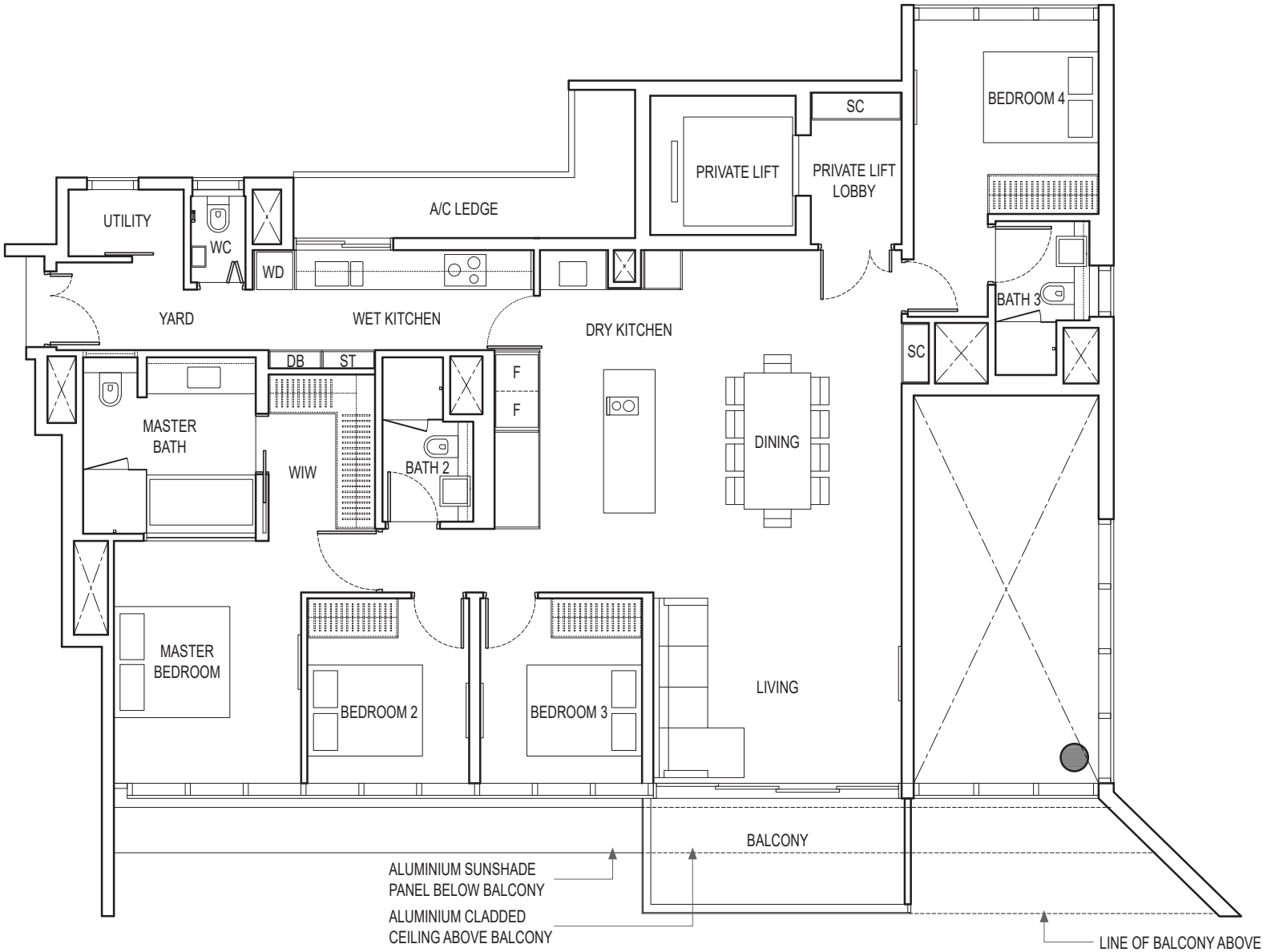
KEYPLAN IS NOT DRAWN TO SCALE

4-BEDROOM PREMIUM

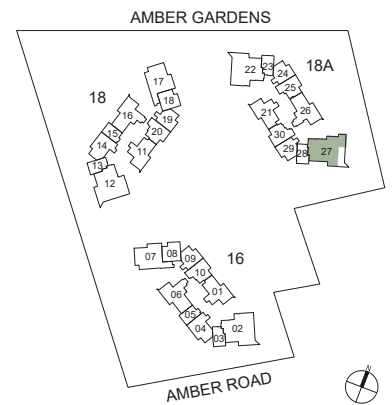
TYPE D3

167 sq m / 1798 sq ft

BLK 18A : #03-27, #05-27, #07-27, #09-27, #11-27,
#13-27, #15-27, #17-27, #19-27



0 1m 2m 5m



Area includes air-con (A/C) ledge, balcony and strata void area where applicable. Please refer to the key plan for orientation. The plans are subject to change as may be approved by relevant authorities. All floor plans are approximate measurements only and are subject to government re-survey. The balcony shall not be enclosed unless with the approved balcony screen.

DB: Distribution Box SC: Shoe Cabinet ST: Storage WIW: Walk-in-Wardrobe / Closet WD: Integrated Washer Dryer
W&D: Washer and Dryer F: Fridge WC: Water Closet PES: Private Enclosed Space

KEYPLAN IS NOT DRAWN TO SCALE

4-BEDROOM + STUDY

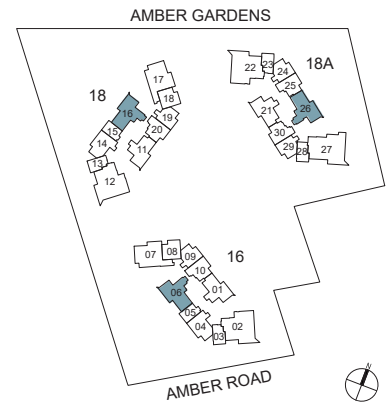
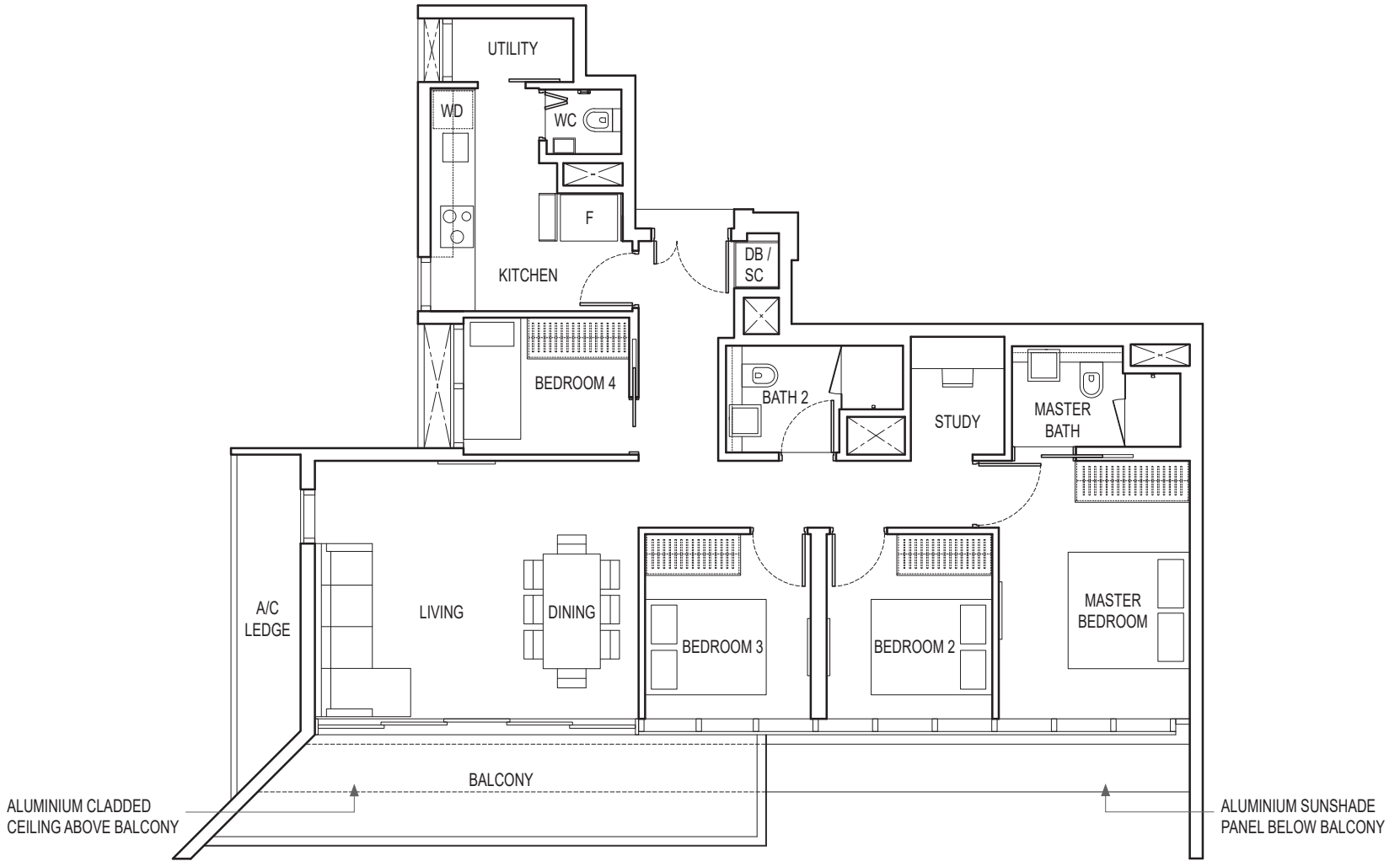
TYPE D4

121 sq m / 1302 sq ft

BLK 16 : #03-06 to #21-06

BLK 18 : #03-16 to #21-16

BLK 18A : #03-26 to #21-26



KEYPLAN IS NOT DRAWN TO SCALE

Area includes air-con (A/C) ledge, balcony and strata void area where applicable. Please refer to the key plan for orientation. The plans are subject to change as may be approved by relevant authorities. All floor plans are approximate measurements only and are subject to government re-survey. The balcony shall not be enclosed unless with the approved balcony screen.

DB: Distribution Box SC: Shoe Cabinet ST: Storage WIW: Walk-in-Wardrobe / Closet WD: Integrated Washer Dryer
 W&D: Washer and Dryer F: Fridge WC: Water Closet PES: Private Enclosed Space

5-BEDROOM PREMIUM

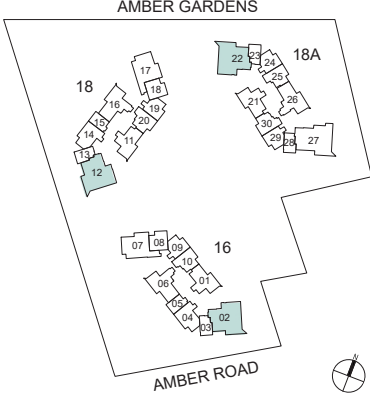
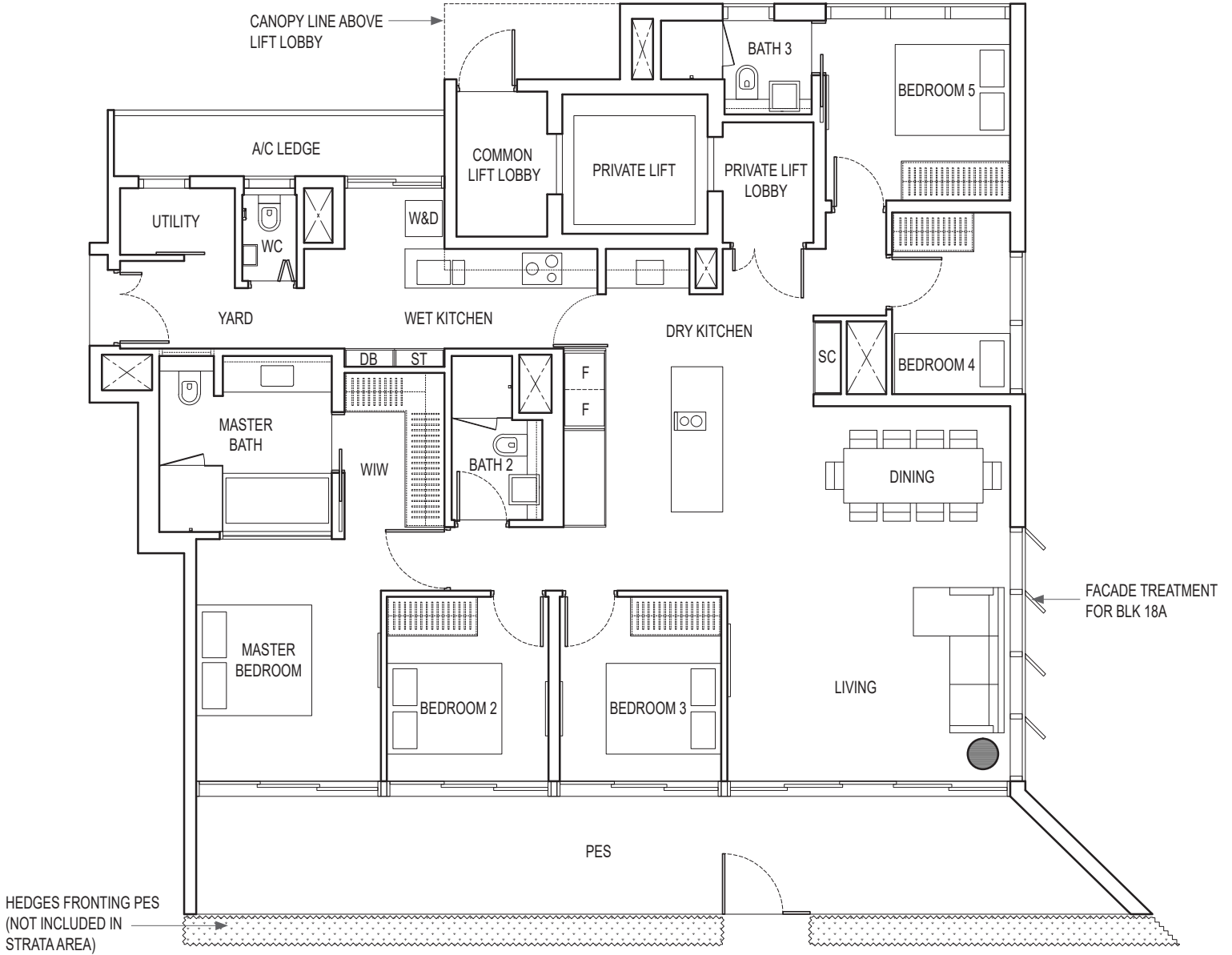
TYPE E1 PES

190 sq m / 2045 sq ft

BLK 16 : #01-02

BLK 18 : #01-12

BLK 18A : #01-22



Area includes air-con (A/C) ledge, balcony and strata void area where applicable. Please refer to the key plan for orientation. The plans are subject to change as may be approved by relevant authorities. All floor plans are approximate measurements only and are subject to government re-survey. The balcony shall not be enclosed unless with the approved balcony screen.

DB: Distribution Box SC: Shoe Cabinet ST: Storage WIW: Walk-in-Wardrobe / Closet WD: Integrated Washer Dryer
 W&D: Washer and Dryer F: Fridge WC: Water Closet PES: Private Enclosed Space

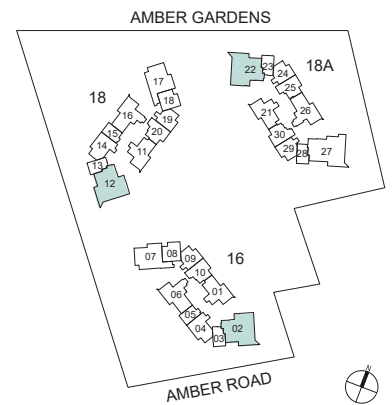
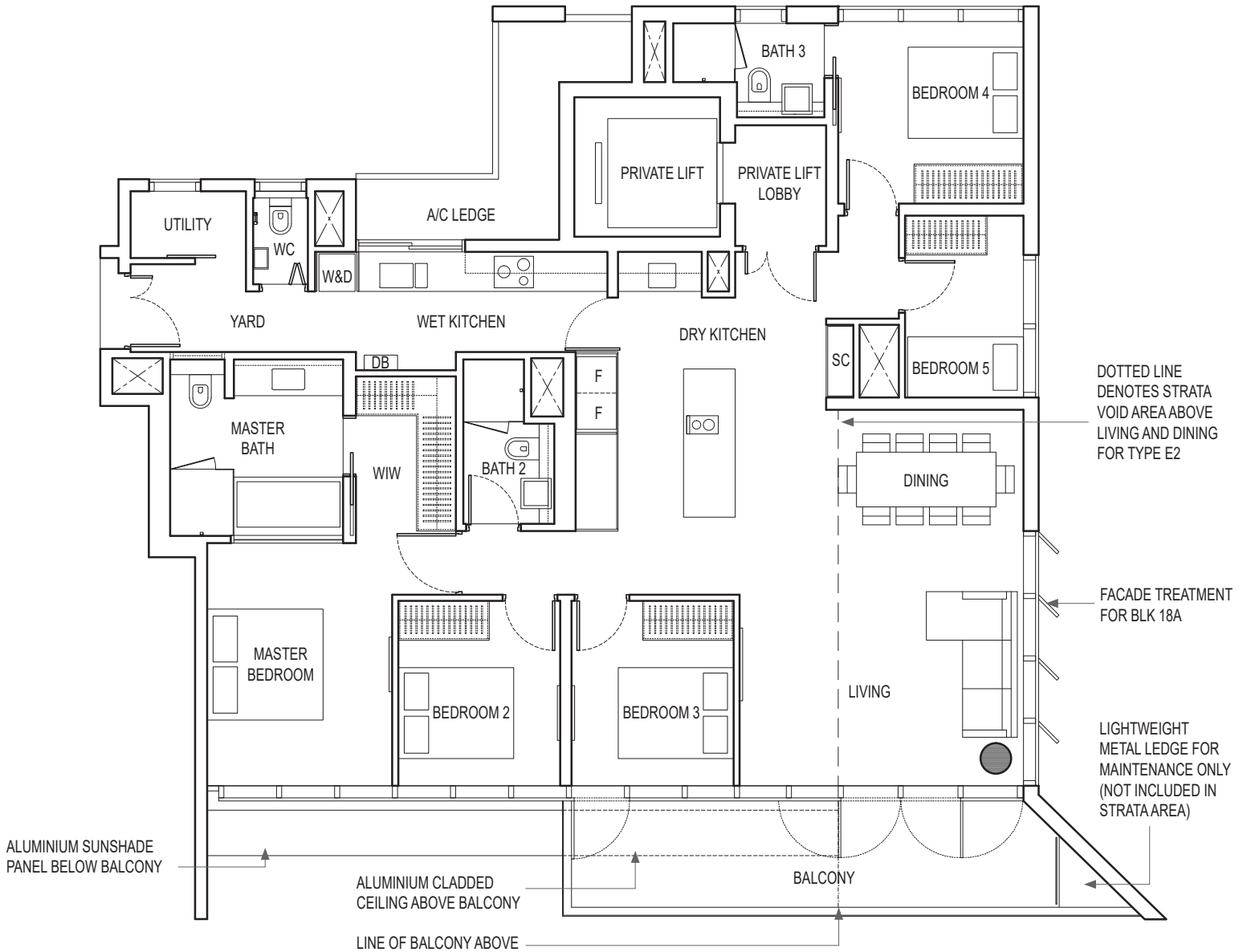
KEYPLAN IS NOT DRAWN TO SCALE

5-BEDROOM PREMIUM

TYPE E2

199 sq m / 2142 sq ft
 (Inclusive of strata void area of
 22 sq m / 237 sq ft above Living and Dining)

- BLK 16 : #02-02, #04-02, #06-02, #08-02, #10-02,
 #12-02, #14-02, #16-02, #18-02
- BLK 18 : #02-12, #04-12, #06-12, #08-12, #10-12,
 #12-12, #14-12, #16-12, #18-12
- BLK 18A : #02-22, #04-22, #06-22, #08-22, #10-22,
 #12-22, #14-22, #16-22, #18-22



Area includes air-con (A/C) ledge, balcony and strata void area where applicable. Please refer to the key plan for orientation. The plans are subject to change as may be approved by relevant authorities. All floor plans are approximate measurements only and are subject to government re-survey. The balcony shall not be enclosed unless with the approved balcony screen.

DB: Distribution Box SC: Shoe Cabinet ST: Storage WIW: Walk-in-Wardrobe / Closet WD: Integrated Washer Dryer
 W&D: Washer and Dryer F: Fridge WC: Water Closet PES: Private Enclosed Space

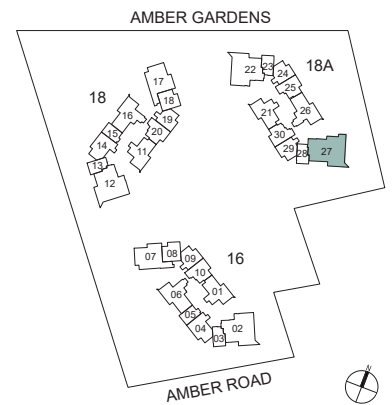
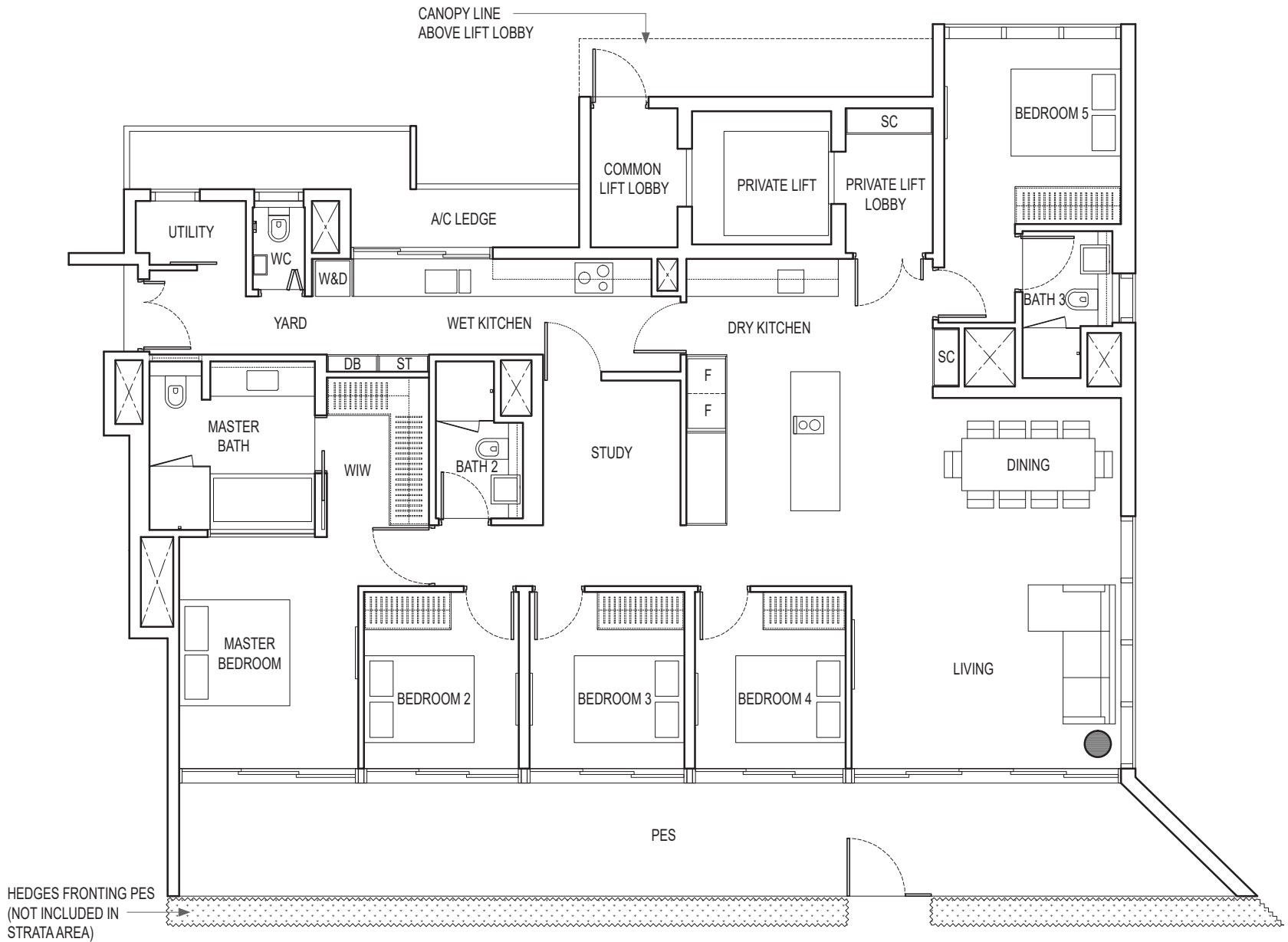
KEYPLAN IS NOT DRAWN TO SCALE

5-BEDROOM + STUDY

TYPE E3 PES

216 sq m / 2325 sq ft

BLK 18A : #01-27



Area includes air-con (A/C) ledge, balcony and strata void area where applicable. Please refer to the key plan for orientation. The plans are subject to change as may be approved by relevant authorities. All floor plans are approximate measurements only and are subject to government re-survey. The balcony shall not be enclosed unless with the approved balcony screen.

DB: Distribution Box SC: Shoe Cabinet ST: Storage WIW: Walk-in-Wardrobe / Closet WD: Integrated Washer Dryer
 W&D: Washer and Dryer F: Fridge WC: Water Closet PES: Private Enclosed Space

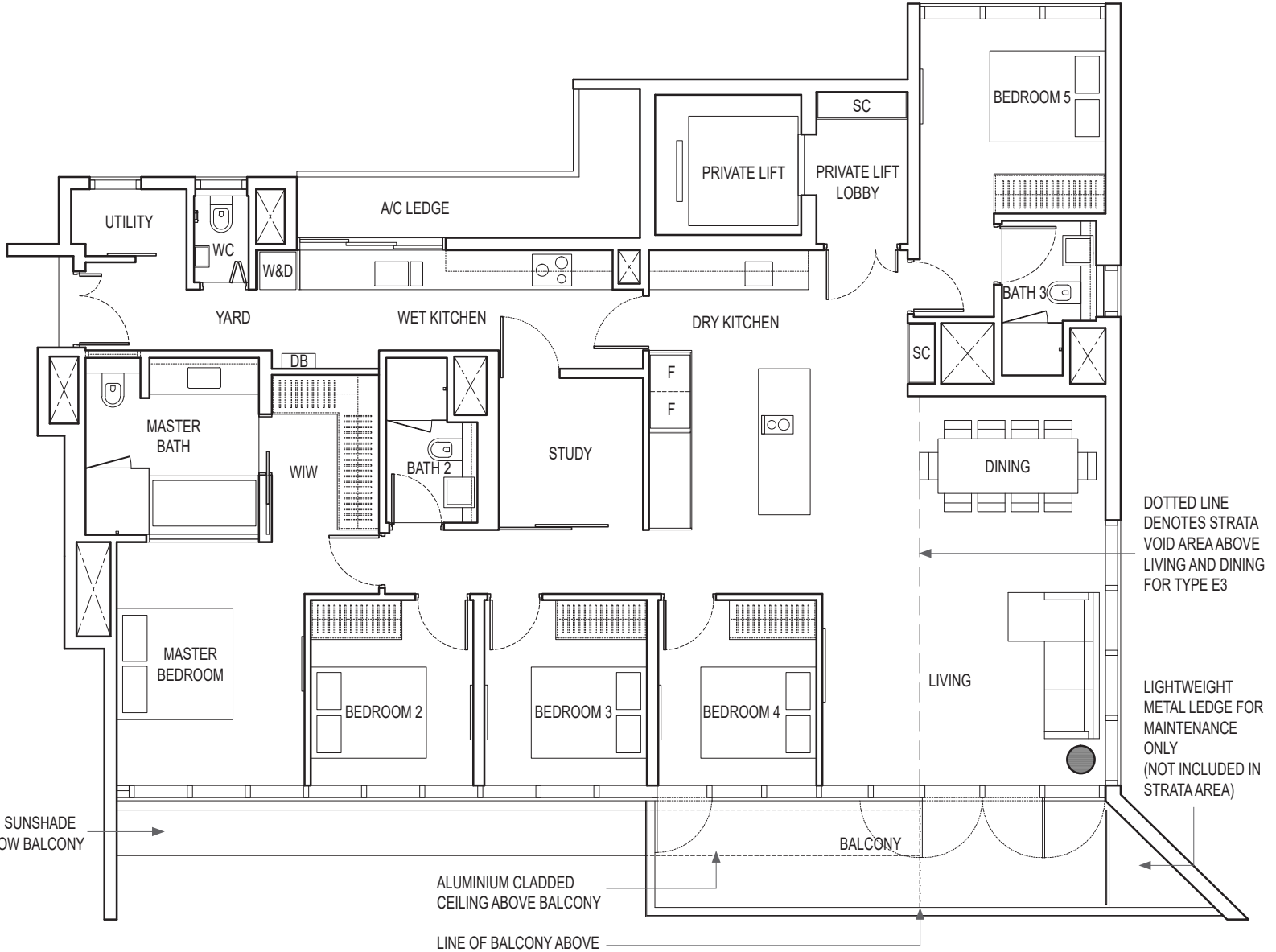
KEYPLAN IS NOT DRAWN TO SCALE

5-BEDROOM + STUDY

TYPE E3

217 sq m / 2336 sq ft
 (Inclusive of strata void area of
 22 sq m / 237 sq ft above Living and Dining)

BLK 18A : #02-27, #04-27, #06-27, #08-27, #10-27,
 #12-27, #14-27, #16-27, #18-27



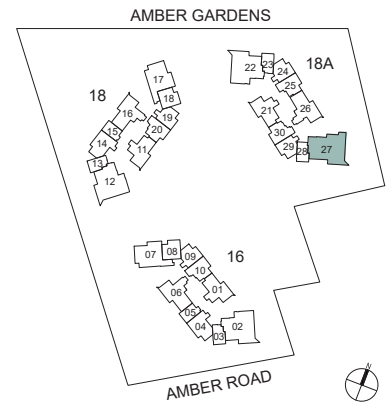
DOTTED LINE DENOTES STRATA VOID AREA ABOVE LIVING AND DINING FOR TYPE E3

LIGHTWEIGHT METAL LEDGE FOR MAINTENANCE ONLY (NOT INCLUDED IN STRATA AREA)

ALUMINIUM SUNSHADE PANEL BELOW BALCONY

ALUMINIUM CLADDED CEILING ABOVE BALCONY

LINE OF BALCONY ABOVE



KEYPLAN IS NOT DRAWN TO SCALE

0 1m 2m 5m

Area includes air-con (A/C) ledge, balcony and strata void area where applicable. Please refer to the key plan for orientation. The plans are subject to change as may be approved by relevant authorities. All floor plans are approximate measurements only and are subject to government re-survey. The balcony shall not be enclosed unless with the approved balcony screen.

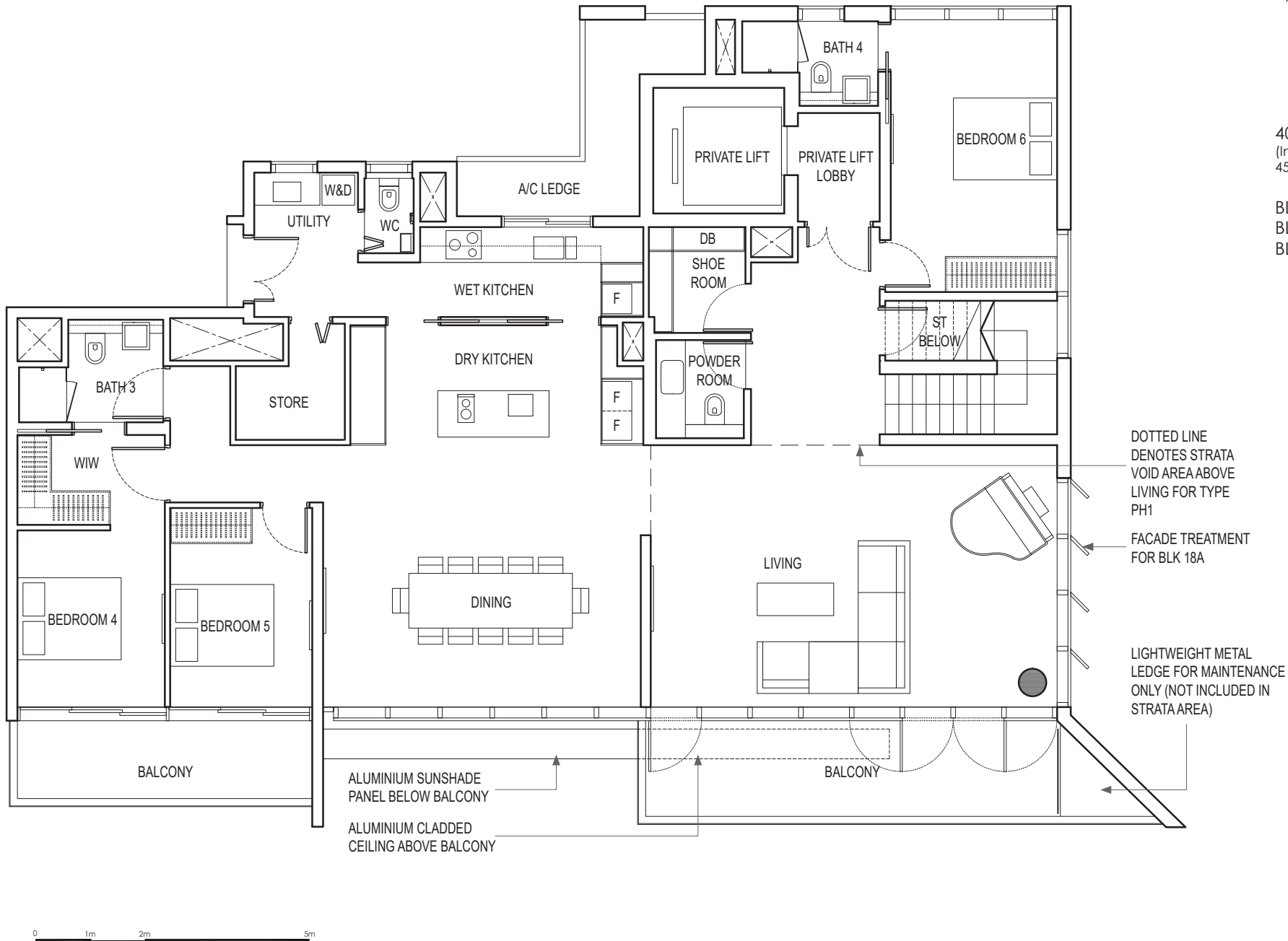
DB: Distribution Box SC: Shoe Cabinet ST: Storage WIW: Walk-in-Wardrobe / Closet WD: Integrated Washer Dryer
 W&D: Washer and Dryer F: Fridge WC: Water Closet PES: Private Enclosed Space

PENTHOUSE (6-BEDROOM)

TYPE PH1 (lower)

408 sq m / 4392 sq ft
 (Inclusive of strata void area of
 45 sq m / 484 sq ft above Living)

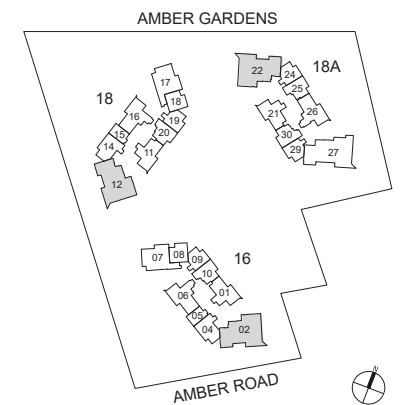
BLK 16 : #20-02
 BLK 18 : #20-12
 BLK 18A : #20-22



DOTTED LINE
 DENOTES STRATA
 VOID AREA ABOVE
 LIVING FOR TYPE
 PH1

FACADE TREATMENT
 FOR BLK 18A

LIGHTWEIGHT METAL
 LEDGE FOR MAINTENANCE
 ONLY (NOT INCLUDED IN
 STRATA AREA)



KEYPLAN IS NOT DRAWN TO SCALE

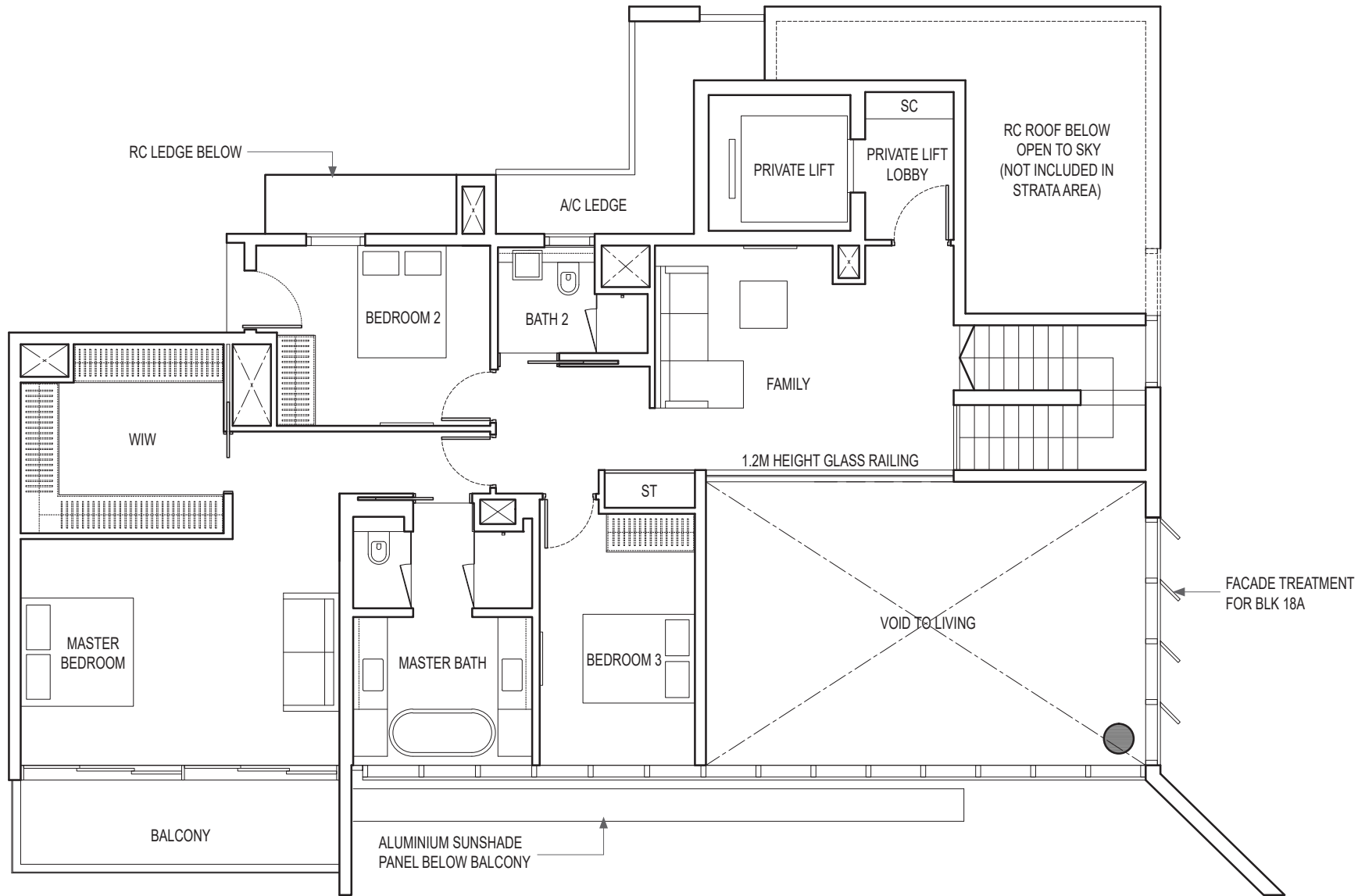
0 1m 2m 5m

Area includes air-con (A/C) ledge, balcony and strata void area where applicable. Please refer to the key plan for orientation. The plans are subject to change as may be approved by relevant authorities. All floor plans are approximate measurements only and are subject to government re-survey. The balcony shall not be enclosed unless with the approved balcony screen.

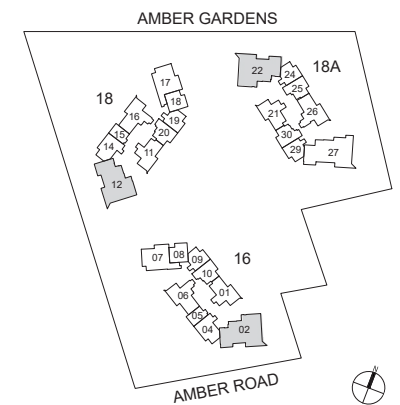
DB: Distribution Box SC: Shoe Cabinet ST: Storage WIW: Walk-in-Wardrobe / Closet WD: Integrated Washer Dryer
 W&D: Washer and Dryer F: Fridge WC: Water Closet PES: Private Enclosed Space

PENTHOUSE (6-BEDROOM)

TYPE PH1 (upper)



BLK 16 : #20-02
 BLK 18 : #20-12
 BLK 18A : #20-22



Area includes air-con (A/C) ledge, balcony and strata void area where applicable. Please refer to the key plan for orientation. The plans are subject to change as may be approved by relevant authorities. All floor plans are approximate measurements only and are subject to government re-survey. The balcony shall not be enclosed unless with the approved balcony screen.

DB: Distribution Box SC: Shoe Cabinet ST: Storage WIW: Walk-in-Wardrobe / Closet WD: Integrated Washer Dryer
 W&D: Washer and Dryer F: Fridge WC: Water Closet PES: Private Enclosed Space

KEYPLAN IS NOT DRAWN TO SCALE

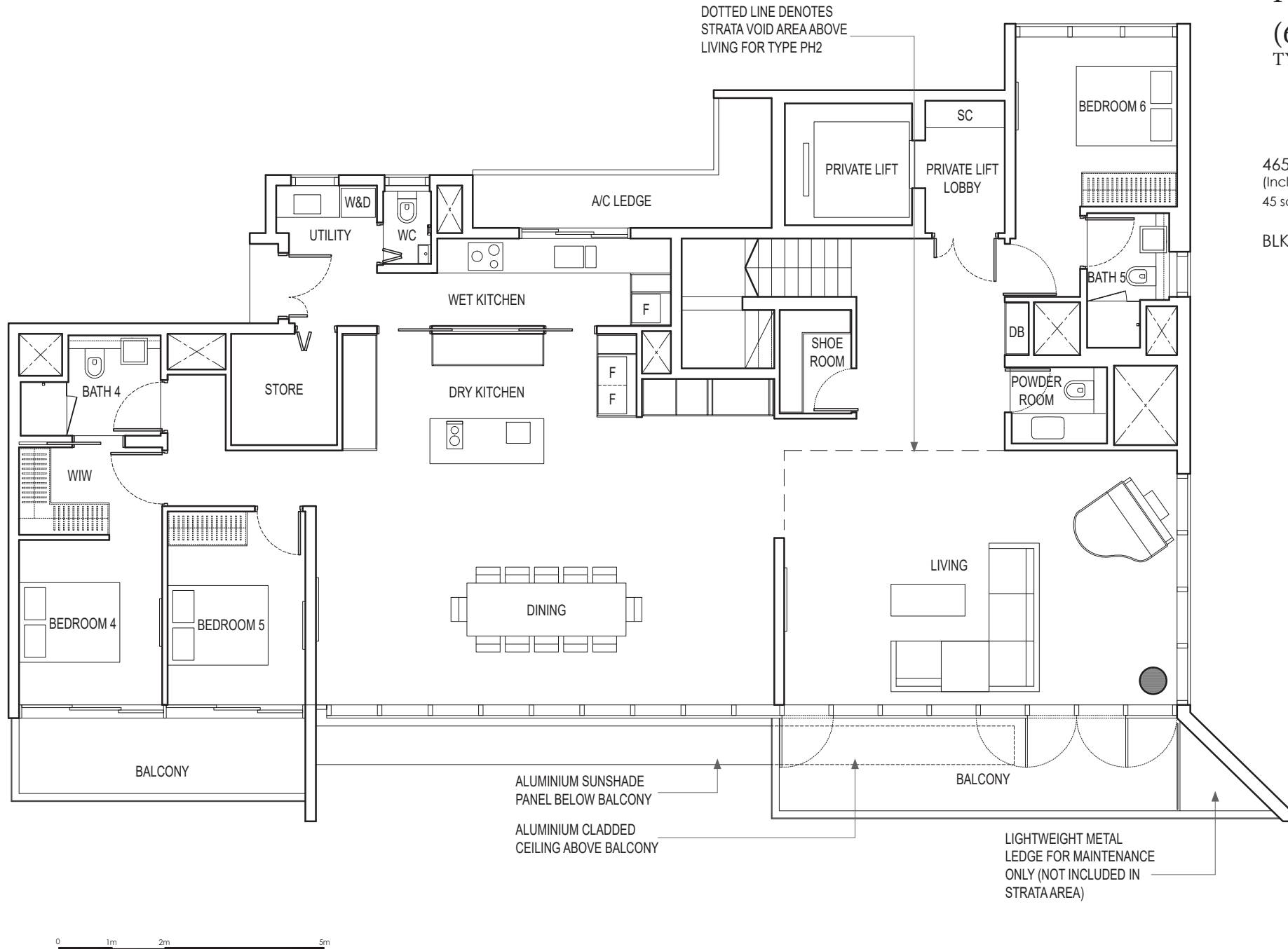
PENTHOUSE

(6-BEDROOM + STUDY)

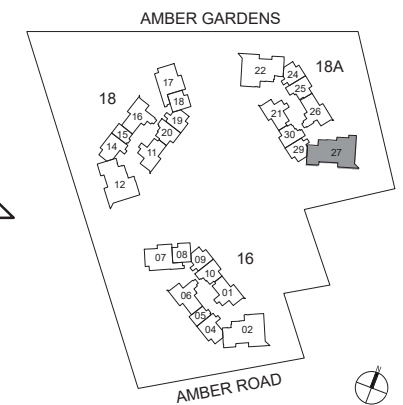
TYPE PH2 (lower)

465 sq m / 5005 sq ft
(Inclusive of strata void area of
45 sq m / 484 sq ft above Living)

BLK 18A : #20-27



0 1m 2m 5m



KEYPLAN IS NOT DRAWN TO SCALE

Area includes air-con (A/C) ledge, balcony and strata void area where applicable. Please refer to the key plan for orientation. The plans are subject to change as may be approved by relevant authorities. All floor plans are approximate measurements only and are subject to government re-survey. The balcony shall not be enclosed unless with the approved balcony screen.

DB: Distribution Box SC: Shoe Cabinet ST: Storage WIW: Walk-in-Wardrobe / Closet WD: Integrated Washer Dryer
W&D: Washer and Dryer F: Fridge WC: Water Closet PES: Private Enclosed Space

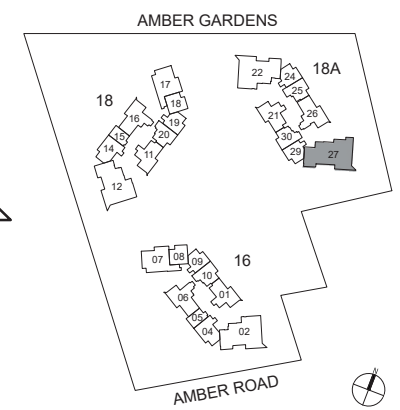
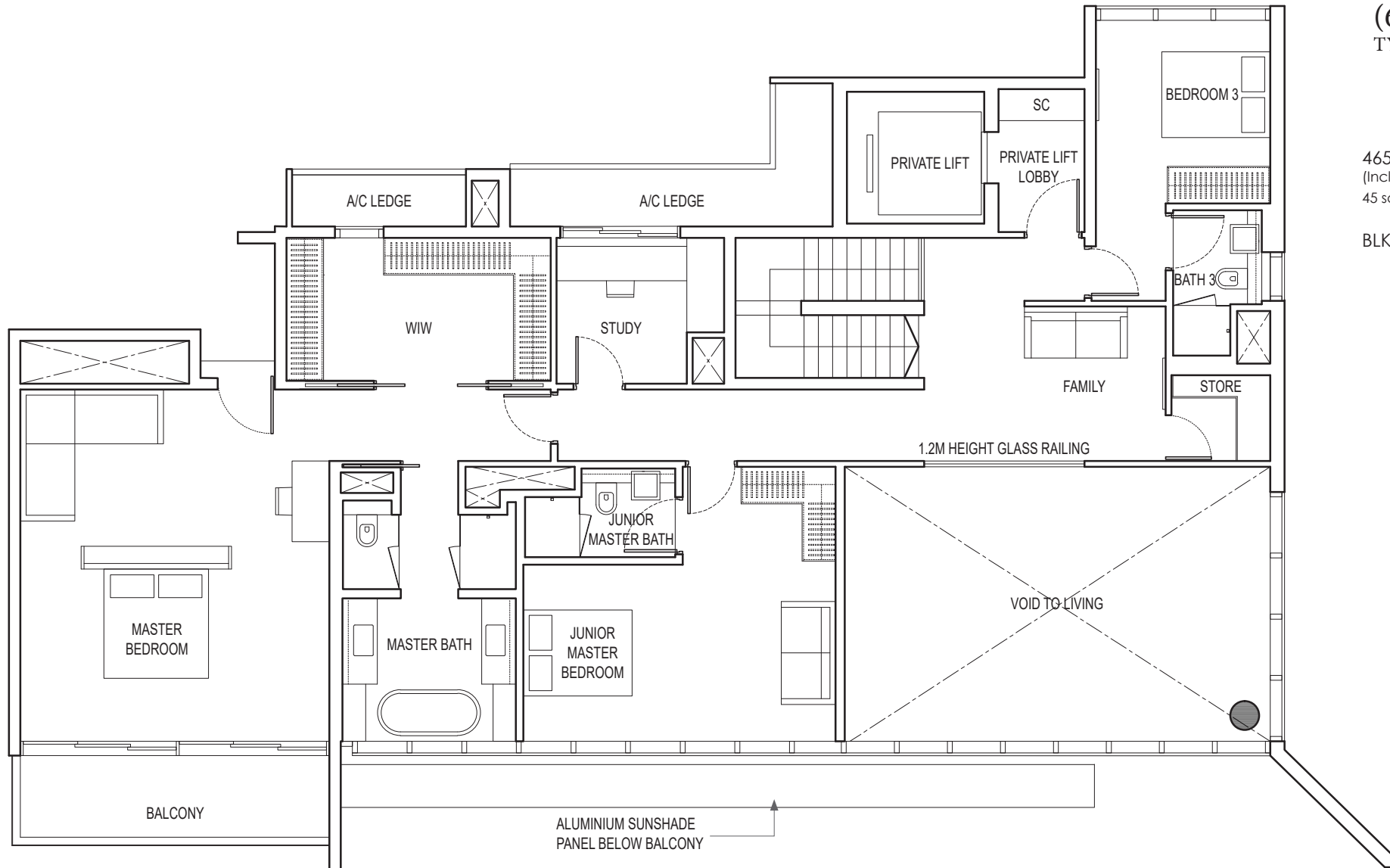
PENTHOUSE

(6-BEDROOM + STUDY)

TYPE PH2 (upper)

465 sq m / 5005 sq ft
 (Inclusive of strata void area of
 45 sq m / 484 sq ft above Living)

BLK 18A : #20-27



Area includes air-con (A/C) ledge, balcony and strata void area where applicable. Please refer to the key plan for orientation. The plans are subject to change as may be approved by relevant authorities. All floor plans are approximate measurements only and are subject to government re-survey. The balcony shall not be enclosed unless with the approved balcony screen.

- DB: Distribution Box
- W&D: Washer and Dryer
- SC: Shoe Cabinet
- F: Fridge
- ST: Storage
- WC: Water Closet
- WIW: Walk-in-Wardrobe / Closet
- PES: Private Enclosed Space
- WD: Integrated Washer Dryer

KEYPLAN IS NOT DRAWN TO SCALE